

24V Ultra-Thin COB Light Strip Embedded Aluminum Slot and Self-Adhesive for Low-Voltage Linear Ceiling LED Lighting

Our Product Introduction

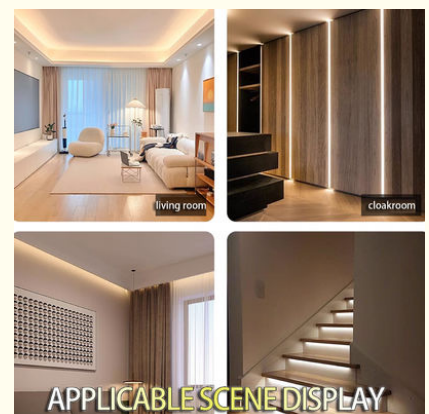
Basic Information

- Place of Origin: SHENZHEN CHINA
- Brand Name: YSENLED
- Certification: CE ROHS LVD EMS
- Model Number: YS-BAPL067-F
- Minimum Order Quantity: 10
- Price: Negotiable
- Packaging Details: 10*1000*20
- Delivery Time: 2DAYS
- Payment Terms: L/C, D/A, D/P, T/T, Western Union, MoneyGram
- Supply Ability: 100,000 meters per week

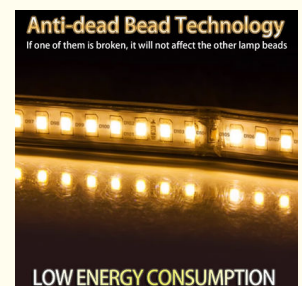
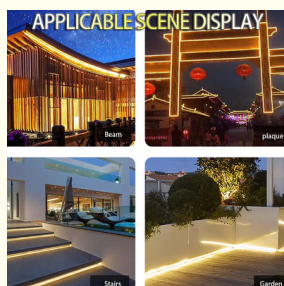


Product Specification

- Highlight: Self-Adhesive COB Light Strip, Embedded Aluminum Slot COB Light Strip, 24V COB Light Strip



More Images



for more products please visit us on led-stripslights.com

Product Description

24V ultra-thin COB light strip embedded aluminum groove self-adhesive low-voltage linear light strip ceiling LED without main light linear light is a lighting product that integrates high efficiency, beauty and easy installation. The following is a detailed introduction to the product:

1. Product Overview

This product is manufactured using advanced COB (Chip on Board) technology, with an operating voltage of 24V, and belongs to the category of low-voltage light strips. Its ultra-thin design makes the light strip take up almost no extra space after installation, and is very suitable for occasions such as ceilings and background walls where light sources need to be hidden. At the same time, the self-adhesive design simplifies the installation process, and users only need to stick the light strip in the predetermined position.



APPLICABLE SCENE DISPLAY

2. Product Features

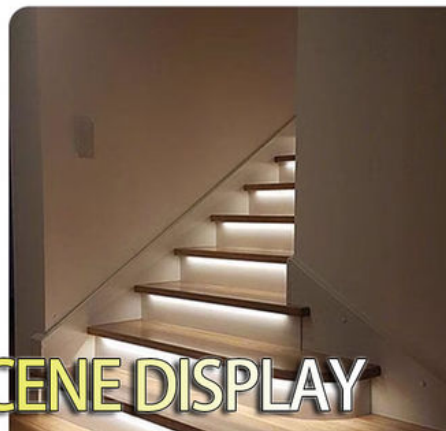
Efficient and energy-saving: Using LED as the light source, it has the advantages of high efficiency and energy saving, low power consumption, and long life, which is in line with the concept of modern green lighting.

High brightness and uniformity: Due to the use of multiple LED chips in parallel, the light strip can achieve a higher brightness, and the light is uniform, without obvious light spots and color differences, which improves the lighting quality.

Rich colors: Light strips of different colors and color temperatures can be customized according to needs to meet diverse lighting needs. Common color temperatures include RGB, 3000K (warm white), 6500K (cold white), 4000K (pure white), etc.

Easy to install: The self-adhesive design makes the installation process easier and faster, without the need for additional fixtures. At the same time, the embedded aluminum groove design also provides good heat dissipation, extending the service life of the light strip.

Safe and reliable: Low-voltage power supply (24V) is safer than high-voltage light strips, and has lower power requirements, making it easy to install and use. In addition, the product has passed a number of safety certifications to ensure the safety of users during use.

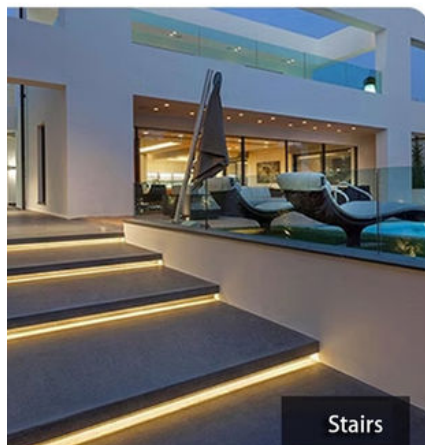


APPLICABLE SCENE DISPLAY

3. Application scenarios

Home decoration: Decorative lighting in locations such as ceilings, background walls, cabinets, wine cabinets, etc., to create a warm and comfortable home atmosphere.

Commercial places: Lighting in public spaces such as shopping malls, supermarkets, hotels, and exhibition halls to enhance the overall lighting effect and attract customer attention.



4. Product specifications and parameters

Input voltage: 24V

LED chip brand: well-known brands such as MTC

LED lamp bead model: COB

Single lamp bead lumen: usually between 115~125lm

Power factor: varies according to the specific model, generally around 10w

Circuit board material: high-quality materials such as rolled copper

Dimmability: supports dimming function, and the light brightness can be adjusted as needed

Effective life: up to 50,000 hours

Dimensions and protection level: The size varies depending on the specific model, and the protection level is usually IP20 (dustproof level)

Anti-dead Bead Technology

If one of them is broken, it will not affect the other lamp beads



5. Installation and maintenance

Installation: Before installation, please ensure that the installation location is flat and clean. Then, paste the light strip according to the predetermined position and connect the power supply. If you need to embed it in the aluminum groove, please follow the installation instructions of the aluminum groove.

Maintenance: Regularly check the connection and luminous effect of the light strip. If you find that the light strip is not bright or the light is uneven, please replace or repair it in time. At the same time, please be careful to avoid external force extrusion or impact on the light strip to avoid affecting its service life.

In summary, 24V ultra-thin COB light strip embedded aluminum groove self-adhesive low-voltage linear light strip ceiling LED without main light linear light products are widely used in home decoration and commercial places due to their high efficiency and energy saving, high brightness and uniformity, rich colors, easy installation and safety and reliability. For more information about this product or purchase consultation, please contact the relevant manufacturers or dealers directly.



SHENZHEN YSENLED LIGHTING CO.,LTD



lyzylight@gmail.com



led-stripslights.com

2F, Building 3, Ruibang Industrial , No.8 Laocun Road, Tangtou, Shiyan, Bao'an District, Shenzhen, Guangdong, China