

Embedded SMD 2835 Light Strip Self-Adhesive Linear Light for Low Voltage 12V and 24V Living Room Lighting

Our Product Introduction

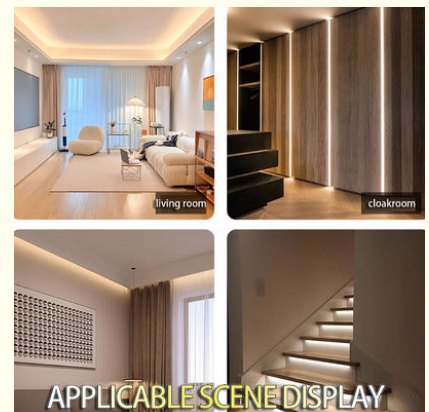
Basic Information

- Place of Origin: SHENZHEN CHINA
- Brand Name: YSENLED
- Certification: CE ROHS LVD EMS
- Model Number: YS-BAPL067-F
- Minimum Order Quantity: 10
- Price: Negotiable
- Packaging Details: 10*1000*20
- Delivery Time: 2DAYS
- Payment Terms: L/C, D/A, D/P, T/T, Western Union, MoneyGram
- Supply Ability: 100,000 meters per week

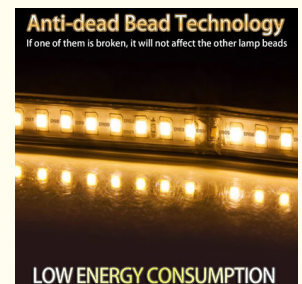
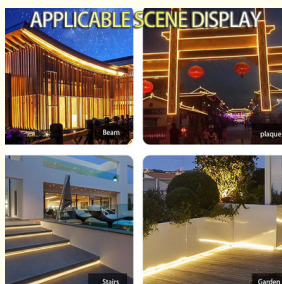


Product Specification

- Color: White
- Led Light Source: SMD 5630
- Remote Control: Included
- Lamp Power: 14.4W/M
- Type: LED Aluminium Profile
- Certifications: CE, RoHS
- Led Type: SMD 2835
- Strip Length: Customizable
- Voltage: 12V
- Waterproof Performance: Good Waterproof Performance (IP65)
- Installation: Self-adhesive Backing
- Materials: High-quality Aluminum Alloy
- Item Type: Light Strips
- Dimmable: Yes
- Shape: Square, Flat, Angle



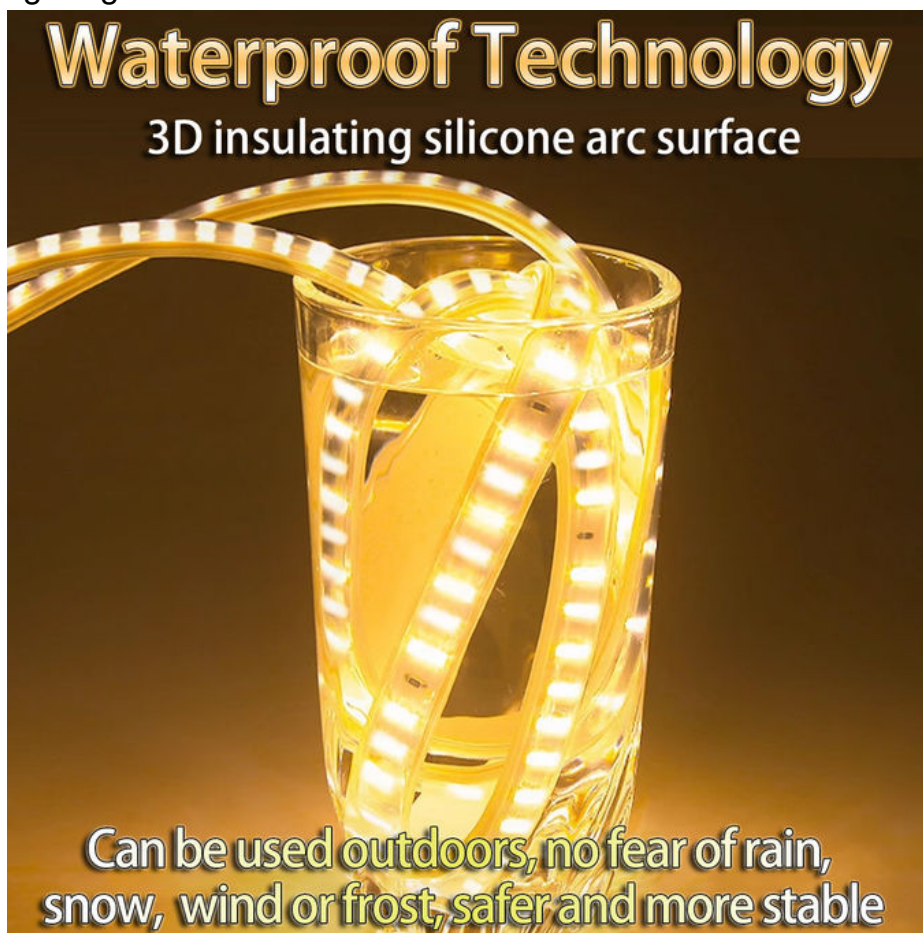
More Images



The following is a detailed introduction to the 12V24V low-voltage light strip self-adhesive linear light living room patch cabinet embedded line light slot LED light strip product:

1. Product Overview

The 12V24V low-voltage light strip self-adhesive linear light is an LED lighting product designed for indoor environments such as living rooms and cabinets. It uses low-voltage power supply to ensure safe use, and the self-adhesive design makes installation easy and quick. The product is presented in the form of a linear light and can be embedded in the slot of furniture or decorations such as cabinets and living rooms to provide a soft and uniform lighting effect.





2. Product Features

Low-voltage safety: Using 12V or 24V low-voltage power supply, it is safer and more reliable to use than traditional high-voltage lighting products, reducing the risk of electric shock and fire.

Self-adhesive design: The back of the light strip is attached with self-adhesive glue, which can be directly pasted on the surface that needs lighting without additional fixings, and the installation is easy and quick.

Linear beauty: Presented in the form of a linear light, it is simple and modern, and can be well integrated into various interior decoration styles.

Uniform lighting: The LED lamp beads on the light strip are evenly distributed, which can provide soft and uniform lighting effects and avoid glare and shadows.

Energy saving and environmental protection: LED as a light source has the characteristics of high efficiency and low power consumption. Compared with traditional lighting products, it can save a lot of electricity and reduce energy consumption.



living room



cloakroom



APPLICABLE SCENE DISPLAY



Living Room Lighting



Bedroom Lighting



Wardrobe Lighting



Ceiling Lighting

APPLICABLE SCENE DISPLAY

3. Product application

Living room lighting: It can be embedded in the ceiling, wall or card slot of the living room to provide soft background lighting and create a warm and comfortable atmosphere.

Cabinet lighting: It can be pasted on the edge inside or below the cabinet to

provide clear lighting effects, which is convenient for taking and displaying items.

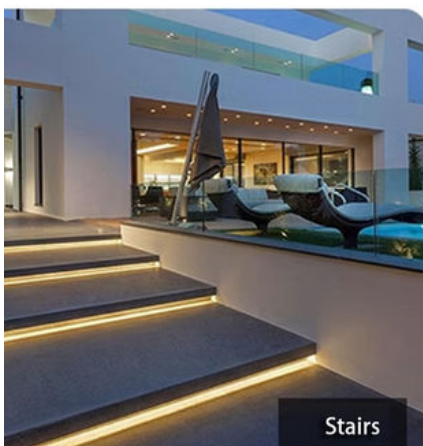
Other interior decorations: It can also be used for lighting interior decorations such as display cabinets, bookshelves, and wine cabinets to enhance the overall beauty and layering.

Anti-dead Bead Technology

If one of them is broken, it will not affect the other lamp beads



APPLICABLE SCENE DISPLAY



4. Product advantages

Quality assurance: High-quality LED lamp beads and circuit components are used to ensure the stability and service life of the product.

Diverse choices: Provide a variety of colors, brightness and lengths to meet the lighting requirements of different scenes and needs.

Easy to maintain: The light strip adopts a modular design. If a part fails, it can be easily replaced without replacing the entire light strip.

5. Precautions

Pre-installation inspection: Before installation, make sure the power is turned off and check the integrity of the light strip to avoid damage during installation.

Use environment: Please avoid using the product in a humid, high temperature or flammable environment to ensure safe use.

Cleaning and maintenance: Wipe the surface of the light strip with a dry cloth regularly, and avoid using a wet cloth or chemical cleaners to avoid damaging the protective film on the surface of the light strip.

In summary, the 12V24V low-voltage light strip self-adhesive linear light living room patch cabinet embedded line light slot LED light strip product has become an ideal choice for indoor lighting due to its low-voltage safety, self-adhesive design, beautiful linear shape, uniform lighting, and energy-saving and environmental protection.



SHENZHEN YSENLED LIGHTING CO.,LTD



lyzylight@gmail.com



led-stripslights.com

2F, Building 3, Ruibang Industrial , No.8 Laocun Road, Tangtou, Shiyan, Bao'an District, Shenzhen, Guangdong, China