

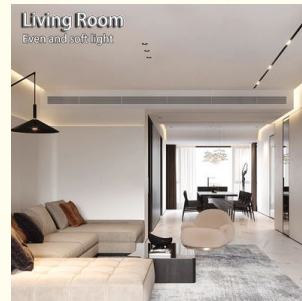
110V-240V Low Voltage COB Light Strip Waterproof Glue Filling for Outdoor Lighting

Our Product Introduction

for more products please visit us on led-stripslights.com

Basic Information

- Place of Origin: SHENZHEN CHINA
- Brand Name: YSENLED
- Certification: CE ROHS LVD EMS
- Model Number: YS-R120X2835RAF3
- Minimum Order Quantity: 10
- Price: Negotiable
- Packaging Details: 10*1000*20
- Delivery Time: 2DAYS
- Payment Terms: L/C, D/A, D/P, T/T, Western Union, MoneyGram
- Supply Ability: 100,000 meters per week

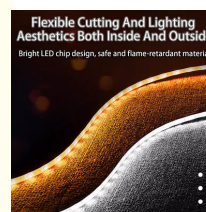


Product Specification

- Lighting Type: 140leds Per Metre
- Dc Voltage: 12 To 24V
- Pcb Width: 6mm,8mm,10mm
- Dimensions: 10000mm*36mm*7mm
- Operating Temperature: -40 To 120
- Lamp Body Material: Copper
- Input Frequency: 50/60 HZ
- Corlor: White Color, RGB For Option
- Product: 5050 RGB Flexible Strip Light
- Watt: 3w-5w
- Waterproof: IP68
- Emitting Color: RGB
- Item Type: Tunnel Lights
- Rated Voltage: 110V-240V
- Power Input: 110-220V



More Images



Our Product Introduction

Product Description

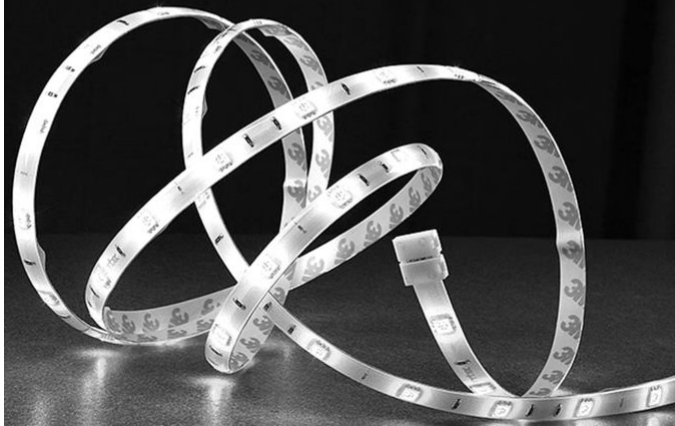
The following is a detailed introduction to the 24v low-voltage COB light strip waterproof glue-filled IP68 water-immersed silicone solid outdoor lighting LED self-adhesive soft light strip product:

1. Product Overview

This product is a low-voltage, high-brightness, waterproof, and self-adhesive LED soft light strip, which is particularly suitable for outdoor lighting and decoration. It uses 24v low-voltage power supply to ensure safe use; at the same time, the IP68 level of waterproof performance enables it to maintain long-term stable lighting effects in harsh outdoor environments.

Applicable Scene >>>

Any place you want to decorate indoors: corridor walls, ceilings, computers, TV edges, stairwells, windows, birthday parties, romantic dinners and many other scenes.



Warm Companionship Is Available At The Touch Of A Button



2. Product Features

Low-voltage power supply: Using 24v low-voltage power supply, it is safer and more reliable than traditional high-voltage light strips, reducing the risk of electric shock, and is suitable for a variety of places such as home and business.

High-brightness chip: Using high-quality COB (Chip On Board) high-brightness chips to ensure that the light strip has excellent brightness and stability.

Waterproof performance: IP68-level waterproof performance means that the light strip can be immersed in water for a long time without damage, which is particularly suitable for lighting and decoration in outdoor pools, swimming pools and other places.

Solid glue filling: The solid silicone glue filling process is adopted to enhance the durability and waterproof performance of the light strip, while making it softer, easy to bend and install.

Self-adhesive design: The back of the light strip is attached with self-adhesive glue, which can be easily pasted on various surfaces, such as walls, ground, underwater objects, etc., and the installation is simple and quick.

Bedchamber

Soft light creates a comfortable sleeping atmosphere



Living Room

Even and soft light



3. Product parameters

Input voltage: 24V

LED chip: COB

Waterproof level: IP68

Material: Solid silicone glue filling

Power: varies according to specific models and lengths

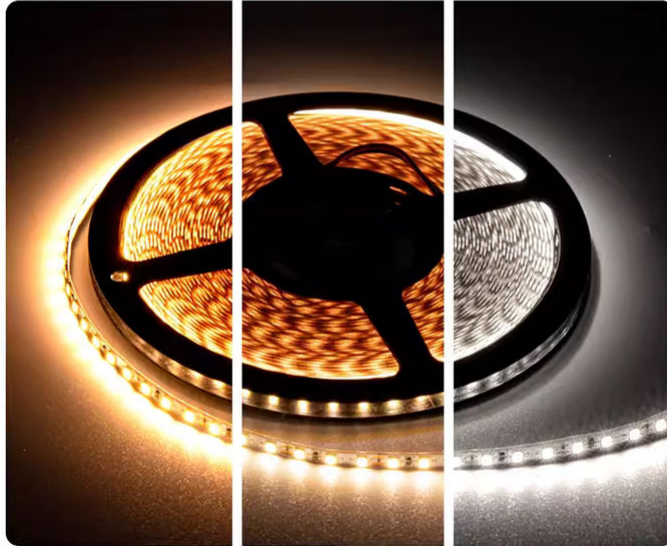
Light effect: high brightness, uniform

Color temperature: can be customized according to needs, such as warm white, pure white, cold white, etc.

Service life: up to tens of thousands of hours

Three Light Colors For Your Choice

Combine lighting and scenes to feel the dynamic feeling



24v Voltage With High Safety



4. Application scenarios

Outdoor landscape: used for landscape lighting in outdoor places such as parks, squares, courtyards, such as tree lights, flower bed lights, etc.

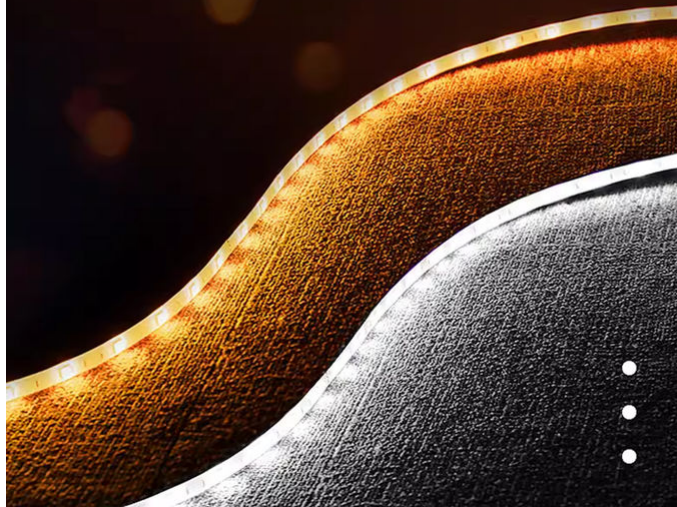
Pools and swimming pools: especially suitable for underwater lighting such as pools and swimming pools, creating a fantastic underwater light and shadow effect.

Architectural decoration: can be used for contour lighting, wall decoration, etc. of buildings to enhance the beauty of buildings.

Commercial display: used for lighting of display cabinets, shelves and other commercial places such as shopping malls, hotels and restaurants to attract customers' attention.

Flexible Cutting And Lighting Aesthetics Both Inside And Outside

Bright LED chip design, safe and flame-retardant material



Dining room

Clear and bright light



5. Installation and maintenance

Installation: Make sure the power is turned off before use, then cut the length of the light strip according to actual needs (be careful to keep both ends of the light strip intact after cutting), and finally stick it to the required position and turn on the power.

Maintenance: Regularly check the connection and waterproof performance of the light strip. If damaged, please replace it in time; avoid using it in extreme environments for a long time to extend its service life.

Flexible Ribbon Structure Diy Your World

The flexible structure allows for easy plastic installation according to the object, and the high-efficiency and high-quality light easily switches the home atmosphere



Warm Companionship Is Available At The Touch Of A Button



6. Precautions

Use environment: Make sure the light strip is used within the specified voltage and current range to avoid overload or short circuit.

Storage conditions: Store in a dry and cool place, avoid direct sunlight and high temperature.

Safe use: Please comply with relevant safety regulations to ensure safety during use.

In summary, the 24v low-voltage COB light strip waterproof glue IP68 soaking silicone solid outdoor lighting LED self-adhesive soft light strip is an outdoor lighting product with superior performance, safety and reliability, and easy installation, suitable for a variety of places and scenes.



SHENZHEN YSENLED LIGHTING CO.,LTD



lyzylight@gmail.com



led-stripslights.com

2F, Building 3, Ruibang Industrial , No.8 Laocun Road, Tanglou, Shiyan, Bao'an District, Shenzhen, Guangdong, China