



IP65 Waterproof Ultra-Thin Patch LED Light Strip for Embedded Line in Living Room

Our Product Introduction

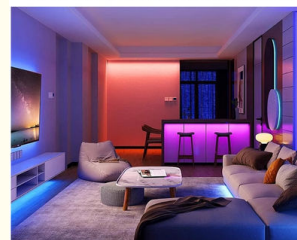
for more products please visit us on led-stripslights.com

Basic Information

- Place of Origin: SHENZHEN CHINA
- Brand Name: YSENLED
- Certification: CE ROHS LVD EMS
- Model Number: YS-BAPL028
- Minimum Order Quantity: 10
- Price: Negotiable
- Packaging Details: 10*1000*20
- Delivery Time: 2DAYS
- Payment Terms: L/C, D/A, D/P, T/T, Western Union, MoneyGram
- Supply Ability: 100,000 meters per week

Scenes Show Various Effects

The effect is applicable to various environments

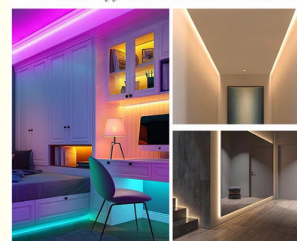


Product Specification

- Lamp Power: 30W/M
- Dimensions: 10000mm*36mm*7mm
- Input Frequency: 50/60 HZ
- Power Source: USB
- Hs Code: 9405409000
- Remote Control Included: No
- Waterproof Rating: IP65
- Working Lifetime: 50000 Hours
- Connector Grade: IP68
- Operating Current: 150mA
- Led Chip Brand: Cree
- Led Size: SMD5050
- Outer Covering: Food Grade Silicons
- Storage Temperature: -20 ~60
- Cuttable Length: Every 3 LEDs

Scenes Show Various Effects

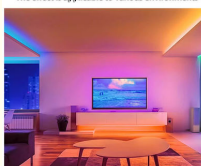
The effect is applicable to various environments



More Images

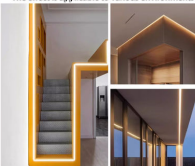
Scenes Show Various Effects

The effect is applicable to various environments



Scenes Show Various Effects

The effect is applicable to various environments



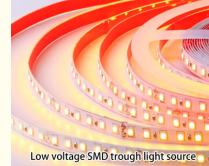
Low Voltage High Display LED Light Strip

Low voltage, high brightness, suitable for various scenarios



Light Through Groove Comparison

24V Low Voltage Light Strip



High Quality Copper Bracket And LED Chip

High quality copper bracket and LED chip, suitable for various scenarios



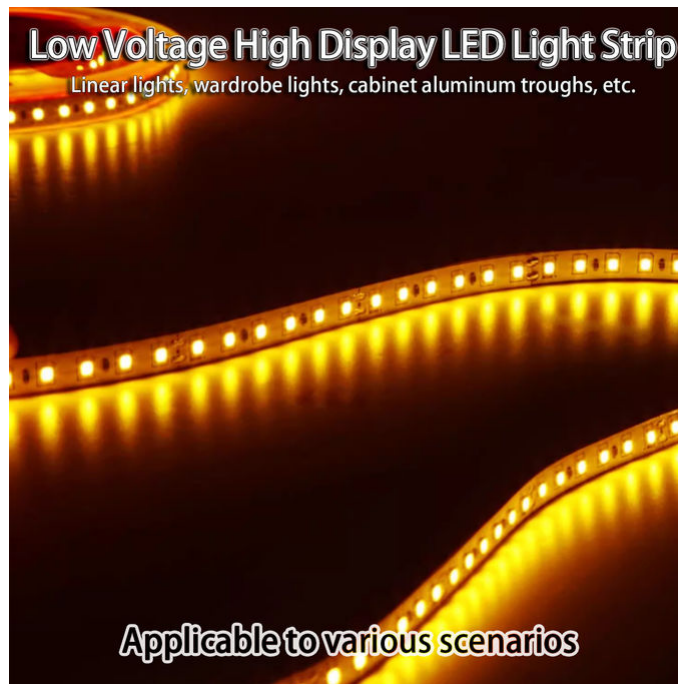
Our Product Introduction

Product Description

The following is a detailed introduction to the LED light strip self-adhesive 12v24v ultra-bright low-voltage ceiling living room embedded line light ultra-thin patch soft light strip:

1. Product Overview

This LED light strip is an ultra-bright self-adhesive line light powered by low-voltage DC 12V or 24V, suitable for interior decoration such as living room ceilings. It adopts ultra-thin patch design, making the product thin and light, easy to install and use.



2. Product Features

Low-voltage safety: The product is powered by 12V or 24V low voltage to ensure safety during use and avoid the risk of electric shock caused by high-voltage lamps.

Super bright luminescence: High-brightness LED lamp beads are used to ensure that the luminous effect of the lamp is bright and uniform, which can enhance the brightness and beauty of the overall space.

Self-adhesive design: The back of the product has self-adhesive glue, which can be directly pasted on the ceiling or other flat surfaces without the need for additional fixings, simplifying the installation process.

Ultra-thin patch: The ultra-thin patch technology makes the product lighter and more compact, suitable for decorative lighting in various narrow spaces.

Customizable size: Light strips of different lengths and widths can be customized according to customer needs to meet the decoration needs of different scenes.

12/24V low voltage light strip, safe to use without hurting anyone



High Brightness And Safe To Touch

Scenes Show Various Effects

The effect is applicable to various environments



3. Product specifications

Input voltage: 12V or 24V (optional)

LED lamp bead model: such as 3528, etc. (different brands or models may vary)

Number of LED lamp beads: Depends on the length and density of the product, such as 120D/180D/240D, etc.

Power factor: Generally 0.6~0.8

Color temperature: A variety of color temperature options are available, such as 3000K (warm white), 4000K (neutral light), 5700K (cold white), etc.

Color rendering index: Usually higher than 80, can truly restore the color of the object

Size: The length can be customized according to needs, and the width generally ranges from a few millimeters to more than ten millimeters

Weight: Depends on the product specifications and length, generally ranging from a few grams to tens of grams per meter

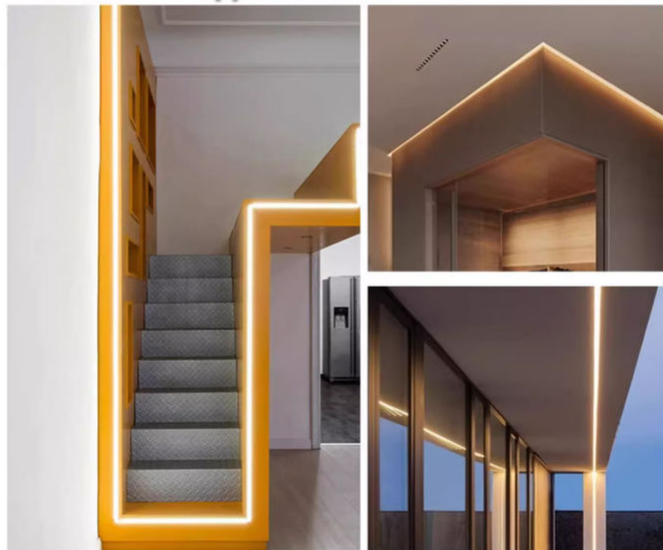
Scenes Show Various Effects

The effect is applicable to various environments



Scenes Show Various Effects

The effect is applicable to various environments



4. Application scenarios

This LED light strip is suitable for a variety of interior decoration scenes such as living room ceilings, TV background walls, cabinet wardrobes, and engineering ceilings. Its ultra-bright luminous effect and ultra-thin design allow the product to be easily integrated into various decorative styles, enhancing the beauty and comfort of the overall space.

5. Installation and precautions

Installation: Tear off the self-adhesive adhesive on the back of the product and stick it directly on the plane to be decorated. Be careful to keep the light strip flat and avoid damage caused by excessive folding or bending.

Precautions:

Before use, please check the integrity and functionality of the product to ensure that there is no damage or malfunction.

During installation, please make sure that the power is turned off and follow the relevant electrical safety regulations.

Avoid using in humid or high temperature environments to avoid affecting the service life and safety of the product.

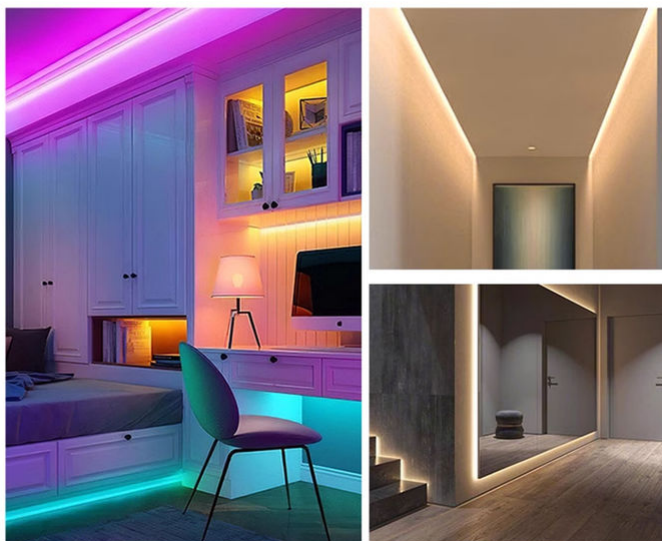
If replacement or repair is required, please contact a professional for operation.

High Quality Copper Bracket And LED Chip



Scenes Show Various Effects

The effect is applicable to various environments



In summary, the LED light strip self-adhesive 12v24v ultra-bright low-voltage ceiling living room embedded line light ultra-thin patch soft light strip is a powerful, easy-to-use, safe and reliable indoor decorative lamp. Its multiple advantages and wide range of application scenarios make it an indispensable part of modern home decoration.



SHENZHEN YSENLED LIGHTING CO.,LTD



lyzylight@gmail.com



led-stripslights.com

2F, Building 3, Ruibang Industrial , No.8 Laocun Road, Tangtou, Shiyan, Bao'an District, Shenzhen, Guangdong, China