

## 36W Linear 45mm LED Light Strip for Living Room 4000k Self-Adhesive Bare Board Advertising Box

Our Product Introduction

for more products please visit us on [led-stripslights.com](http://led-stripslights.com)

### Basic Information

- Brand Name: YSENLED
- Certification: CE ROHS LVD EMS
- Model Number: YS-R120X2835RAF3
- Minimum Order Quantity: 10
- Price: Negotiable
- Packaging Details: 10\*1000\*20
- Delivery Time: 2DAYS
- Payment Terms: L/C, D/A, D/P, T/T, Western Union, MoneyGram
- Supply Ability: 100,000 meters per week

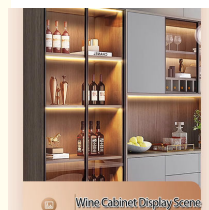
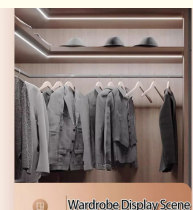
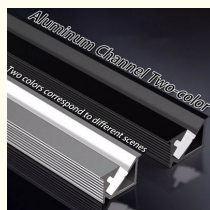


### Product Specification

- Features: IP68, Explosion Proof, Impact Proof
- Type: Industrial Flexible Led Strip Light
- Lumen: 22-25lm/LED
- Lighting Color: White/Green/Red/Blue
- Working Temperature: -35-45
- Cri: 80Ra
- Service: OEM ODM Available
- Waterproof: Yes
- Color Temperature: 5500K
- Size: 20\*10mm
- Ip Raing: IP20
- Ingress Protection: IP68
- Batteries Included: No
- Dimention: 3 Meter Per Reel
- Watt: 36W



### More Images



### Product Description

The following is a detailed introduction to the 12v linear 45mm narrow light strip and 24v led light strip (living room 4000k, self-adhesive bare board, advertising box sign patch):

#### 1. Product Overview

Product Name: 12v/24v LED light strips

Application scenarios: living room decoration, advertising boxes, signboard lighting, etc.

Main features: linear design, narrow version specifications (such as 45mm), 4000k color temperature (neutral light), self-adhesive bare board, SMD LED

Our Product Introduction

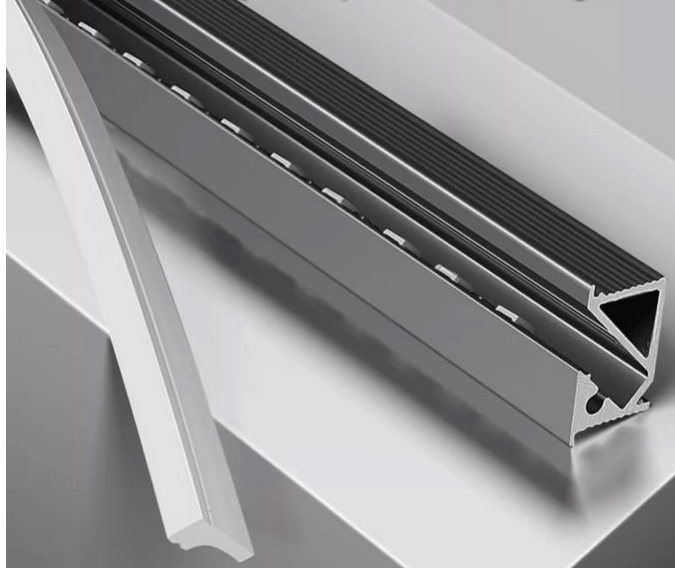
## Hidden Lamp Installation

Does not destroy the overall coordination of the cabinet



## Uniform Light Without Glare

Silicone lampshade professional soft light



### **2. Product specifications**

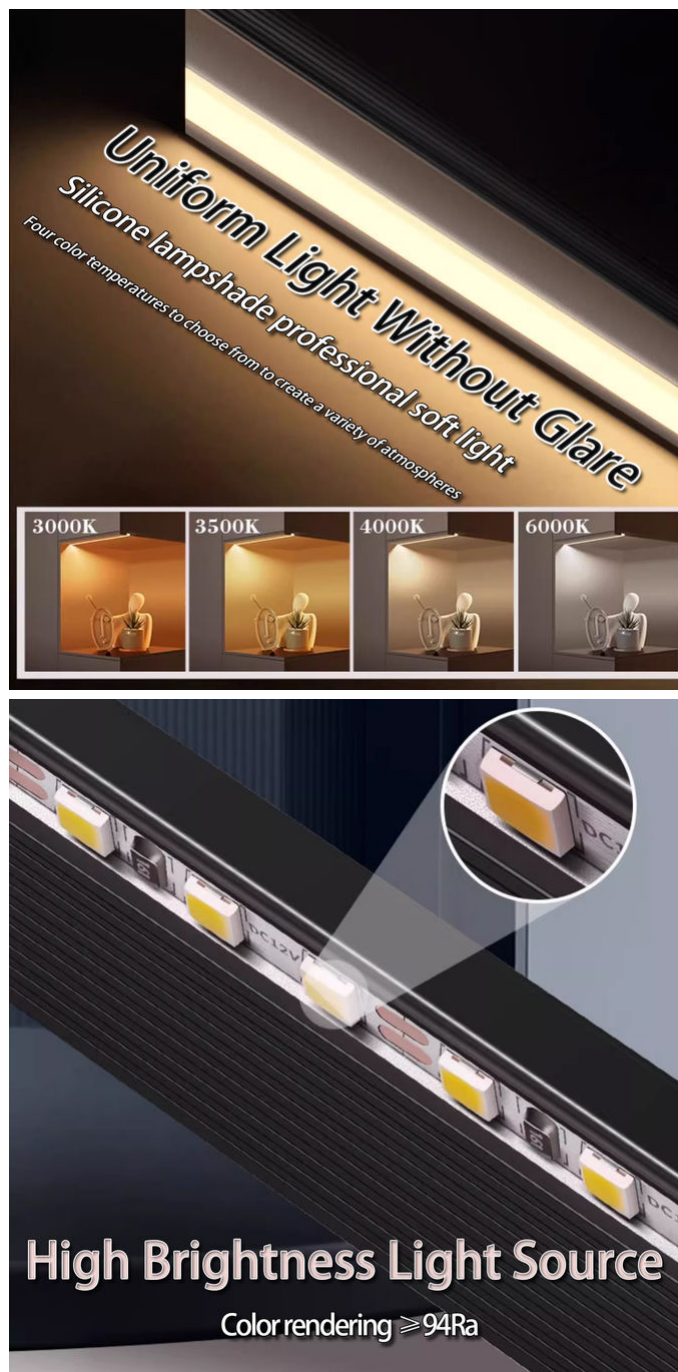
Voltage: supports 12v or 24v low-voltage power supply, safe and energy-saving

Width: 45mm (narrow version design, easy to install and hide)

Color temperature: 4000k (provides comfortable neutral light, suitable for living rooms and other home environments)

Lamp bead type: SMD LED (even light emission, long life)

Self-adhesive design: self-adhesive glue is attached to the back for easy installation and removal



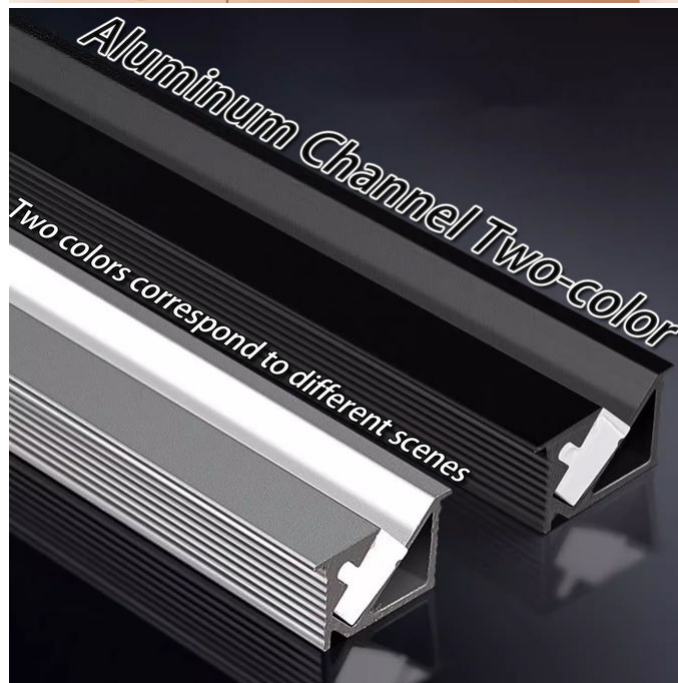
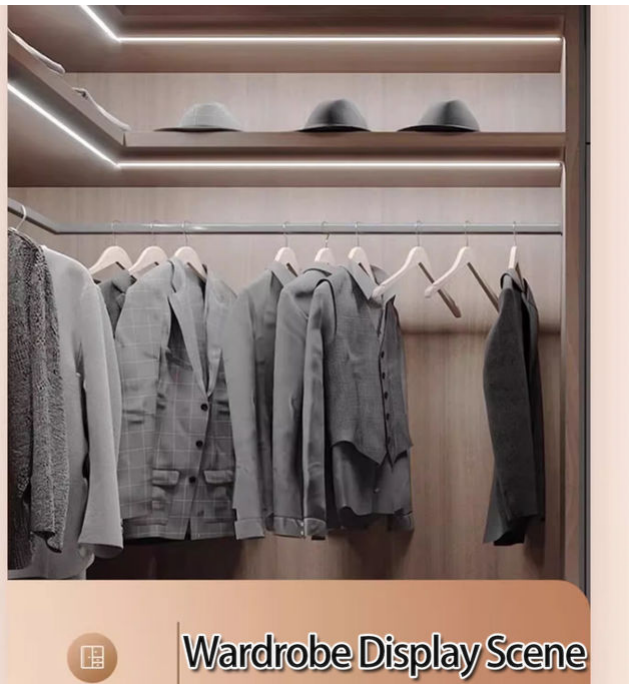
### **3. Product performance**

High brightness: high-quality LED lamp beads are used to provide high-brightness lighting effects

Color rendering index: high color rendering index ( $\geq 80$ ), can truly restore the color of objects

Dustproof level: has a certain dustproof ability (such as IP3X level), suitable for a variety of environments

Waterproof performance: some products may have waterproof performance (specific to be determined according to the product model)



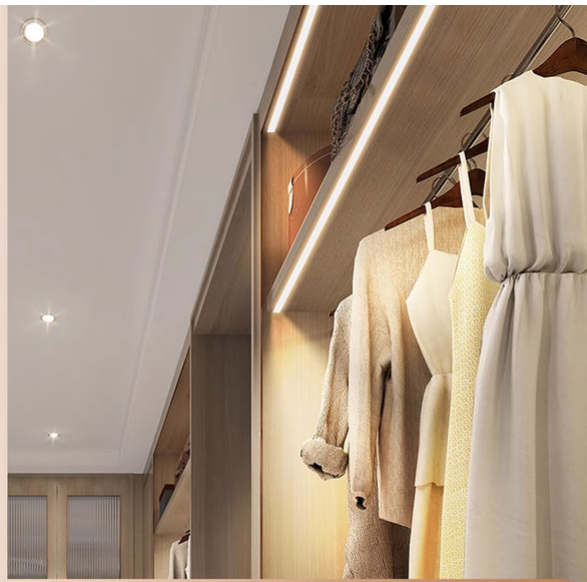
#### **4. Installation and maintenance**

Installation method: through self The adhesive is directly pasted on the installation surface, which is convenient and quick.

Cutting method: Some products support one cut for one light, which is convenient for cutting according to actual needs.

Maintenance suggestions: Regularly check the connection of the light strip and the status of the lamp beads, keep them clean and dry.





Use Scenario Display



Use Scenario Display

### 5. Application scenario examples

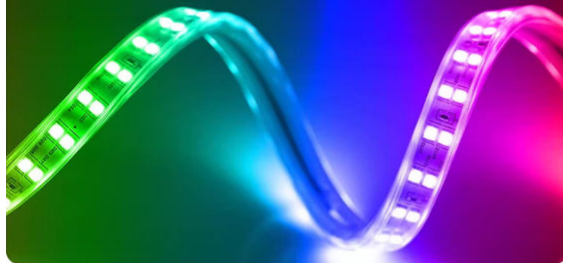
Living room decoration: As auxiliary lighting or decorative lighting in the living room, it provides a warm and comfortable environment.

Advertising box/signboard lighting: Provide uniform lighting effects for advertising boxes or signs to enhance brand image and attractiveness.



Wine Cabinet Display Scene

Transparent Rubber Sleeve Is Flexible  
Can be bent at will



Can Be Bent At Will  
Waterproof and fully sealed technology



VISIBLE  
DETAILS

#### 6. Precautions

**Check before use:** Before use, please check whether the voltage, length and power of the light strip meet the requirements.

**Safe use:** Please make sure to comply with relevant safety regulations during installation and use to avoid dangerous situations such as electric shock or short circuit.

**Quality assurance:** Choose regular brands and channels to purchase products to ensure product quality and after-sales service.

**In summary, 12v linear 45mm narrow version light strip, 24v led light strip (living room 4000k, self-adhesive bare board, advertising box sign patch) products have many advantages and a wide range of application scenarios. When selecting and using, please be sure to pay attention to the product specifications, performance and quality requirements.**



SHENZHEN YSENLED LIGHTING CO.,LTD



lyzylight@gmail.com



led-stripslights.com

2F, Building 3, Ruibang Industrial, No.8 Laocun Road, Tangtou, Shiyao, Bao'an District, Shenzhen, Guangdong, China