

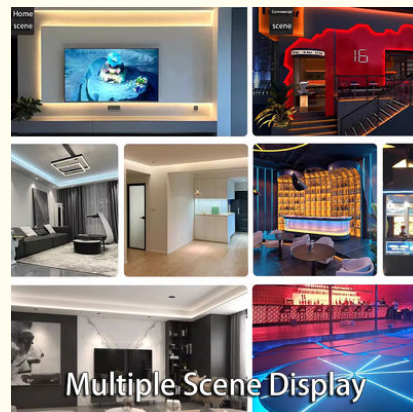


## Self-Adhesive Linear Light Strip 10m 20m Embedded LED Atmosphere Light

Our Product Introduction

### Basic Information

- Place of Origin: SHENZHEN CHINA
- Brand Name: YSENLED
- Certification: CE ROHS LVD EMS
- Model Number: YS-BAPL028
- Minimum Order Quantity: 10
- Price: Negotiable
- Packaging Details: 10\*1000\*20
- Delivery Time: 2DAYS
- Payment Terms: L/C, D/A, D/P, T/T, Western Union, MoneyGram
- Supply Ability: 100,000 meters per week

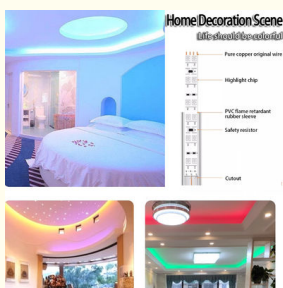


### Product Specification

- Ip Level: IP68
- Waterproof Rate: IP20/IP65/IP67/IP68
- Package: 5m/roll
- Power Input: AC110V-250V
- Watt: 3w-5w
- Led Chip: SMD2835
- Lamp Quantities: 60 LEDs/M
- Luminous: 576LM
- Support Dimmer: Yes
- Batteries Included: No
- Pcb: Aluminum
- Sample: Free Sample Is Available
- Voltage: 12V
- Range Of Using: Indoor And Outdoor
- Cuttable: Yes



### More Images



for more products please visit us on led-stripslights.com

The following is a detailed introduction to the 24V low-voltage light strip self-adhesive linear light (10m/20m without voltage drop) embedded LED line atmosphere light aluminum groove product:

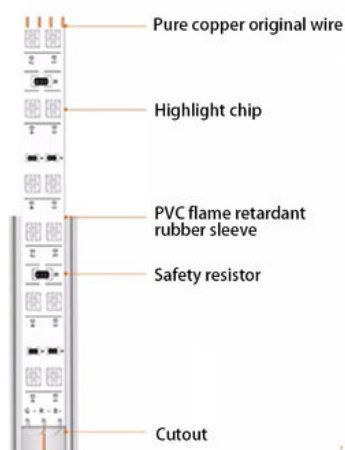
### 1. Product Overview

This product is an LED atmosphere light designed for home decoration, hotel decoration and commercial display. It uses 24V low-voltage power supply to ensure safe use, and adopts self-adhesive design for easy installation and removal. The lines are smooth and the light is soft, which can create a warm and romantic atmosphere.



### Home Decoration Scene

Life should be colorful





## Outdoor Scene

Life should be colorful



## **2. Product Features**

**Low-voltage safety:** 24V low-voltage power supply is used to effectively avoid the safety hazards caused by high voltage, which is particularly suitable for home and commercial places.

**No-voltage drop design:** Whether it is 10 meters or 20 meters in length, it can ensure that the light strip has no voltage drop over the entire length, uniform brightness, and no flickering.

**Self-adhesive installation:** The back of the light strip has self-adhesive glue, which can be directly pasted on the aluminum groove or other flat surface, and the installation is simple and quick.

**Embedded design:** The light strip can be embedded in the aluminum groove to form a flat line light, which is both beautiful and practical.

**High-quality LED lamp beads:** High-quality LED lamp beads are selected, with high luminous efficiency, low light decay and long service life.

**Multiple color temperatures are available:** A variety of color temperature options are provided, such as warm white, pure white, cold white, etc., to meet the lighting needs of different occasions.



# Multi-color RGB Light Strip

A variety of styles to add color to life



High color



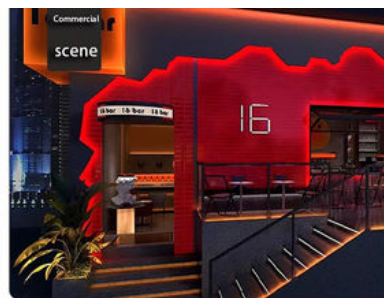
Waterproof



Practical and nice



Transparent rubber cover



## Multiple Scene Display

### 3. Product specifications

Input voltage: 24V

Power: It varies according to the specific number of lamp beads and brightness, but the power per meter is usually around 10W.

Number of lamp beads: The number of lamp beads per meter varies

according to the specific model, and the common ones are 60/meter, 120/meter, etc.

Length: Two lengths of 10 meters and 20 meters are available.

Color temperature: A variety of color temperatures are available, such as 3000K (warm white), 4000K (pure white), 6500K (cold white), etc.

Color rendering index:  $\geq 80$ , some high-quality products can reach  $\geq 90$ .



VISIBLE  
DETAILS

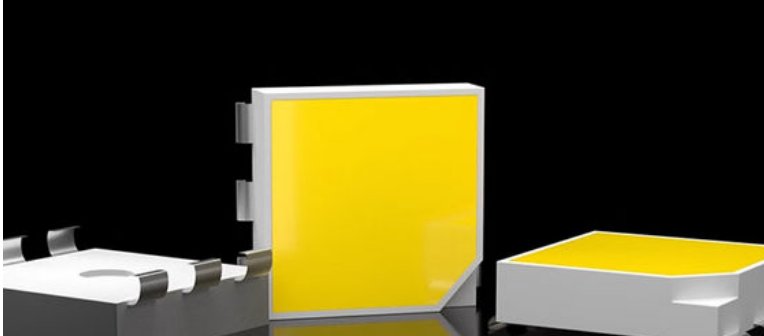
## Anti-death Bead Design

If one lamp is not lit it will not affect other lamp beads



## High Brightness Chip With Long Life

Brighter and more durable



HIGH QUALITY

### 4. Application

#### scenarios

Home decoration: It can be used for atmosphere lighting in living rooms, bedrooms, study rooms and other spaces to increase the sense of layering and warmth of the space.

Hotel decoration: It can be used for lighting decoration in the lobby, corridors, guest rooms and other areas to enhance the quality and atmosphere of the hotel.

Commercial display: It can be used for lighting in display cabinets, booths, specialty stores and other places to highlight the exhibits and attract customers' attention.

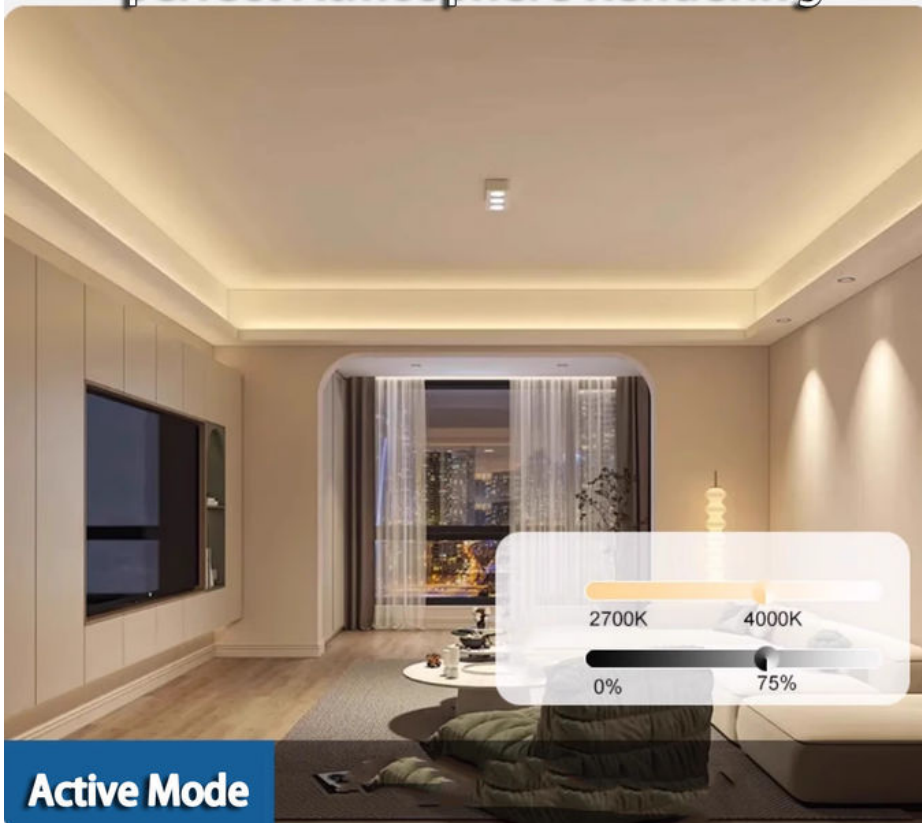


# High Quality Full Spectrum Light Strip

High-quality profiles with guaranteed quality



Personalized Scene Lighting And Color  
perfect Atmosphere Rendering



## 5. Installation and maintenance

Installation: Clean the installation surface, tear off the protective paper on the back of the light strip, stick the light strip on the aluminum groove or other flat surface, and connect the power supply.

Maintenance: Regularly check the connection between the light strip and the

power supply to ensure that the connection is firm; avoid exposing the light strip to a humid or high temperature environment for a long time; if the light strip is found to have abnormal conditions such as decreased brightness or flickering, it should be replaced or repaired in time.

**In summary, the 24V low-voltage light strip self-adhesive linear light (10 meters/20 meters without voltage drop) embedded LED line atmosphere light aluminum groove product has many advantages and a wide range of application scenarios, and is an ideal choice for lighting in homes and commercial places.**



SHENZHEN YSENLED LIGHTING CO.,LTD



[lyzylight@gmail.com](mailto:lyzylight@gmail.com)



[led-stripslights.com](http://led-stripslights.com)

2F, Building 3, Ruihang Industrial , No.8 Laocun Road, Tangtou, Shiyan, Bao'an District, Shenzhen,  
Guangdong, China