

## Wire Drawing Surface 24V LED Light Strip for Special Brightness Outdoor Lighting

### Our Product Introduction

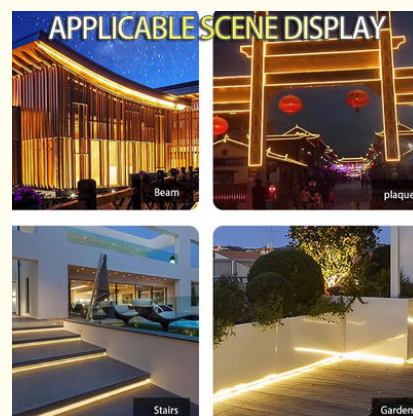
#### Basic Information

- Place of Origin: SHENZHEN CHINA
- Brand Name: YSENLED
- Certification: CE ROHS LVD EMS
- Model Number: YS-BAPL028
- Minimum Order Quantity: 10
- Price: Negotiable
- Packaging Details: 10\*1000\*20
- Delivery Time: 2DAYS
- Payment Terms: L/C, D/A, D/P, T/T, Western Union, MoneyGram
- Supply Ability: 100,000 meters per week

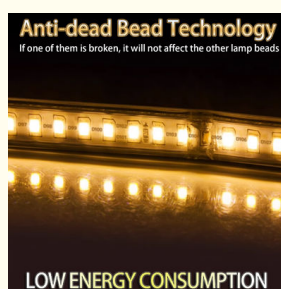
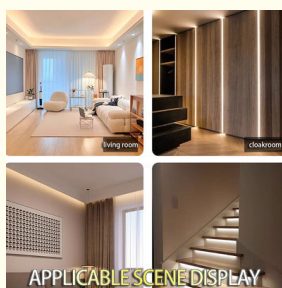
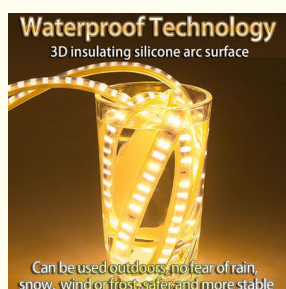


#### Product Specification

- Warranty: 3 Years
- Installation: Self-adhesive Backing
- Surface Treatments: Oxidation, Sandblasting, Wire Drawing
- Cct: 6000-6500/2800-3000
- Power Factor: Above 0.9
- Led Quantity: 300
- Wattage: 14.4W
- Ip Rating: IP65
- Brightness: 1200 Lumens
- Color: White
- Item Type: Light Strips
- Remote Control: Yes
- Heat Dissipation Design: Good Thermal Conductivity
- Shape: Square, Flat, angle
- Power: 24W



#### More Images

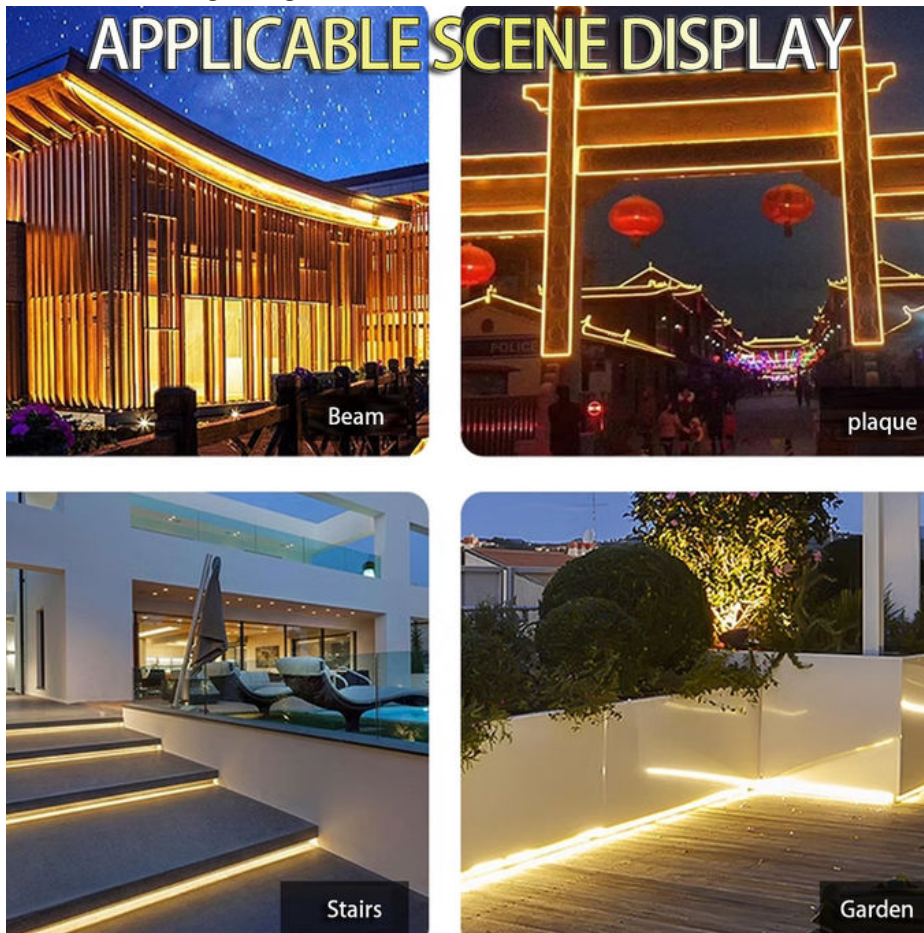


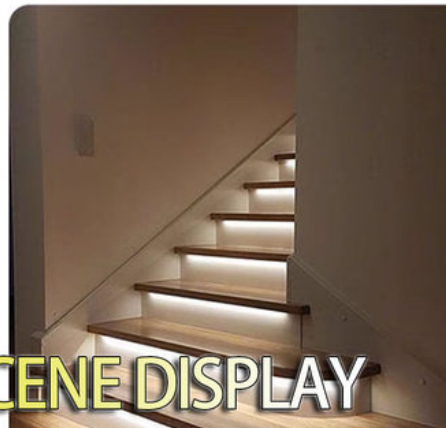
## Product Description

# 24V low-voltage LED light strip waterproof outdoor lighting tunnel basement decoration project special bright lighting special light strip product introduction

## 1. Product Overview

This product is a 24V low-voltage LED light strip designed for outdoor lighting, tunnels, basements and other decoration projects. It has the characteristics of waterproof, high brightness, energy saving and durability. It is an ideal choice for modern lighting decoration.





## APPLICABLE SCENE DISPLAY

### **2. Product Features**

**Low-voltage safety:** 24V low-voltage power supply is adopted to ensure safety during use and avoid the risk of electric shock caused by high voltage.

**High-brightness lighting:** High-quality LED lamp beads are adopted, and the lumen of a single lamp bead is high. The overall lighting effect is bright and uniform, meeting various lighting needs.

**Waterproof performance:** The waterproof design is adopted, and the surface of the light strip has a waterproof layer, which effectively prevents moisture from intruding and ensures stable operation in a humid environment.

**Energy saving and environmental protection:** LED light strips have the characteristics of low power consumption and high efficiency. Compared with traditional lighting methods, they can save a lot of energy and reduce carbon emissions.

**Strong durability:** Made of high-quality materials and advanced technology, the light strips have a long service life and reduce replacement and maintenance costs.

**Easy to install:** The light strip is designed to be flexible and can be cut and connected according to actual needs, which is convenient for installation and use.





Living Room Lighting



Bedroom Lighting



Wardrobe Lighting

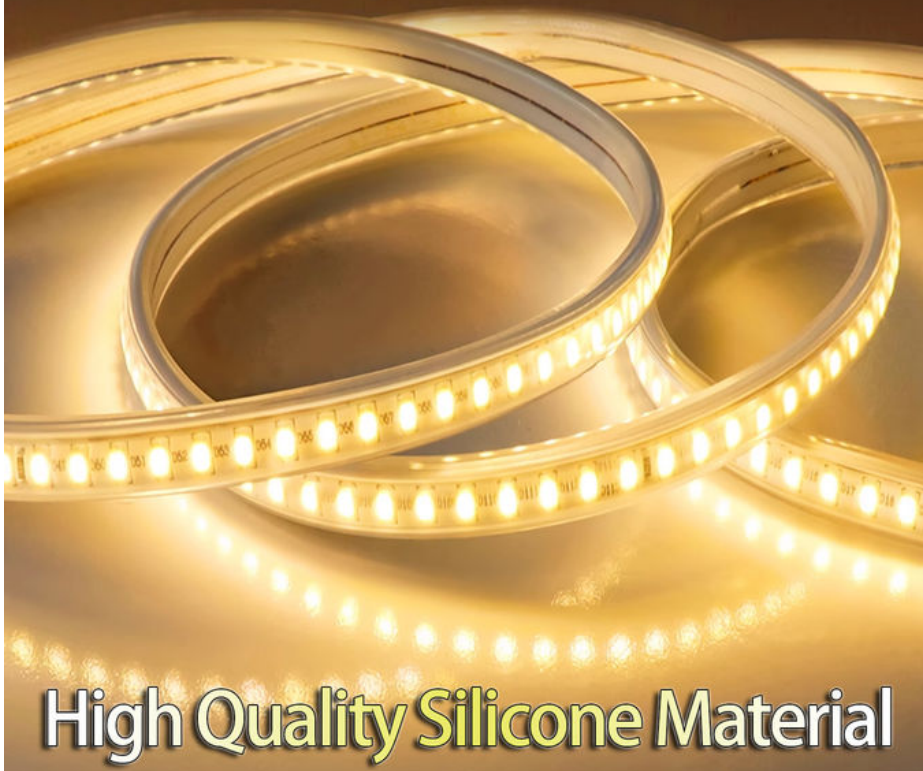


Ceiling Lighting

APPLICABLE SCENE DISPLAY

## 144 BEADS LIGHT STRIP

High Color Rendering | 3d Curved Silicone | Longer Life



High Quality Silicone Material

### 3. Product advantages

Waterproof LED light strip: Emphasizes the waterproof performance of the product and is suitable for humid environments such as outdoor, tunnels, and basements.

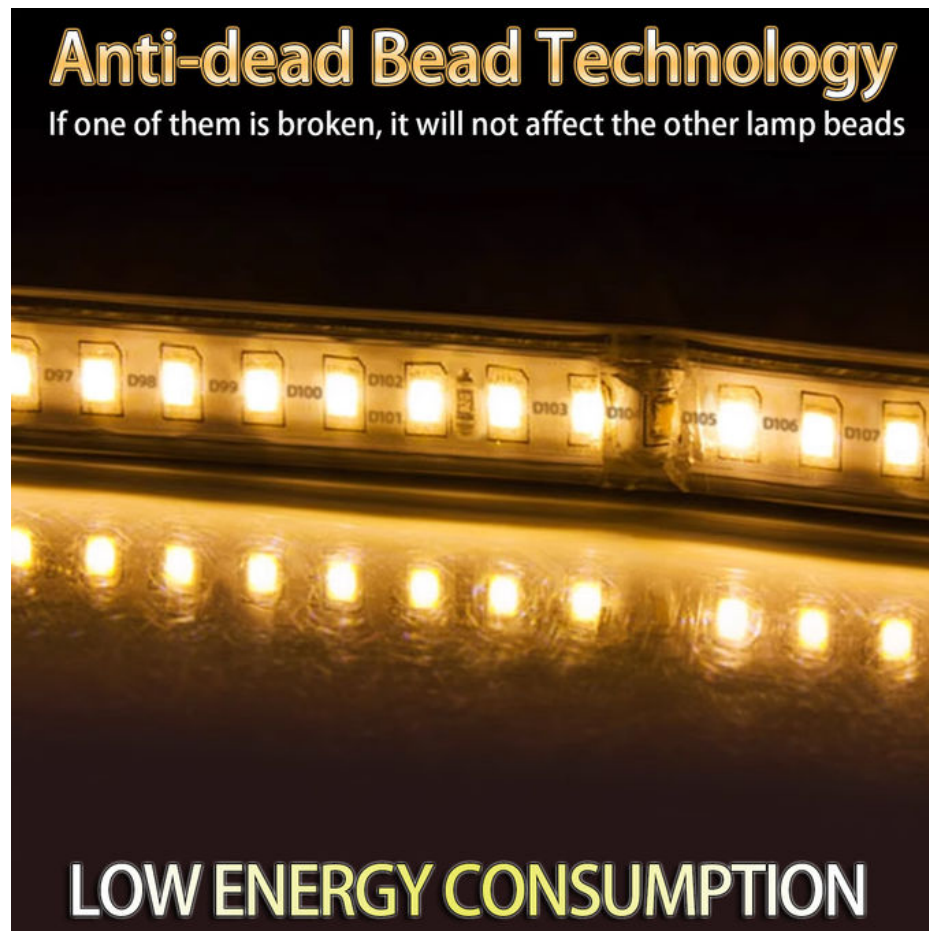
High-brightness lighting: Highlights the lighting effect of the product to meet

various lighting needs, such as tunnel lighting, advertising decoration, etc.  
Low-voltage safety: Emphasizes the low-voltage power supply characteristics of the product to ensure safety during use.

Energy saving and environmental protection: Highlights the energy-saving and environmental protection characteristics of the product, which is in line with the green development trend of modern society.

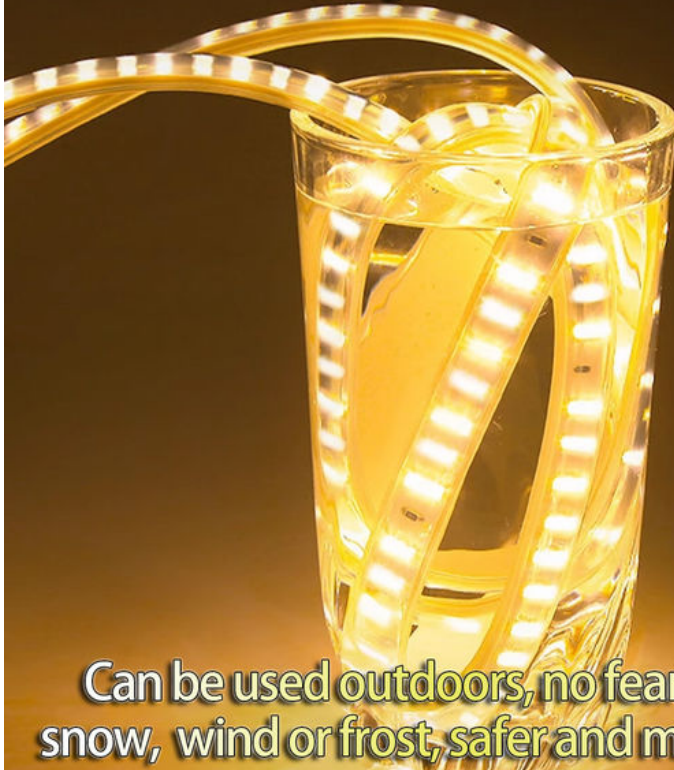
Special for extra-bright lighting: Extra-bright lighting strips designed for specific places (such as tunnels and basements) to meet special lighting needs.

Outdoor lighting decoration: Suitable for outdoor landscapes, advertising decoration and other occasions to enhance the overall visual effect.



# Waterproof Technology

3D insulating silicone arc surface



Can be used outdoors, no fear of rain, snow, wind or frost, safer and more stable

## 4. Product

### specifications and parameters

Input voltage: 24V

LED chip brand: high-quality LED chip

Number of LED beads: such as 72 beads, 120 beads, etc.

Lumen of a single bead: high brightness (the specific value depends on the product model)

Beam angle: customized according to actual needs

Power factor: high power factor to ensure high efficiency and energy saving

Effective life: up to 50,000 hours

Protection level: IP65 (or higher) waterproof level

Color temperature: can be customized according to actual needs (such as warm white light, positive white light, etc.)

Color rendering index: high color rendering index to ensure true color restoration

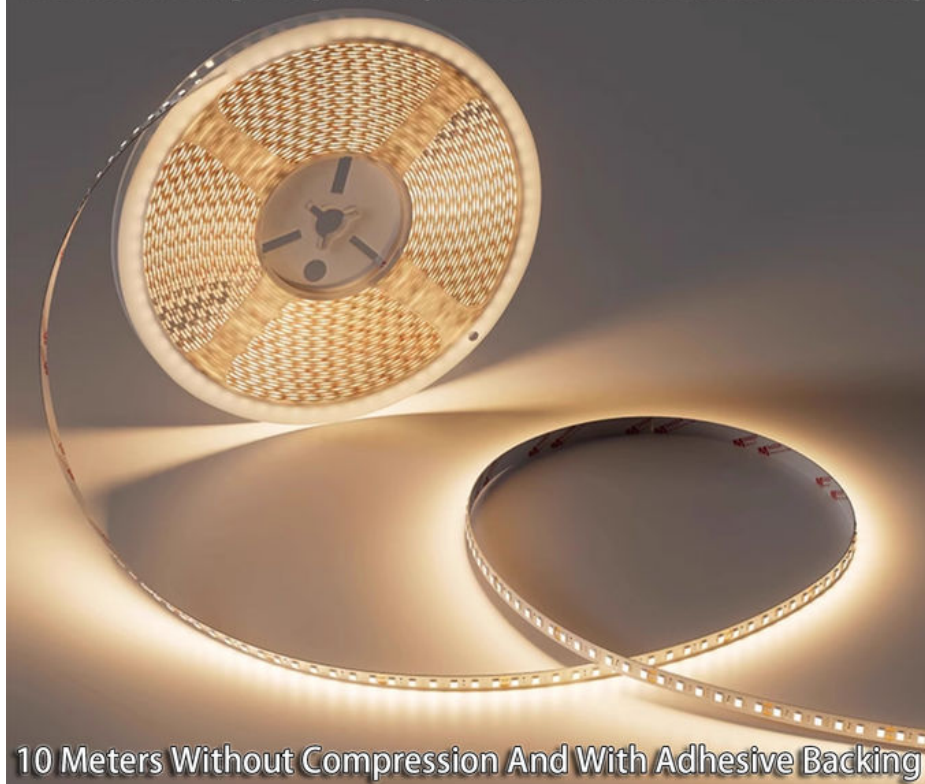




**Three Light Colors For You To Choose**

## **Eye Protection 98 Cri Led Light Strip**

Close to natural light to protect eyes New standard for comfortable living



10 Meters Without Compression And With Adhesive Backing

### **5. Application scenarios**

This product is suitable for various outdoor lighting, tunnels, basements and other decoration projects, such as:

Tunnel lighting: provide bright and uniform lighting effects to ensure driving safety.

Outdoor advertising decoration: enhance the visual effects of outdoor facilities such as billboards and landscape lights.

Basement lighting: provide stable lighting effects to meet the use needs of underground space.

Other decoration projects: such as lighting decoration in bridges, roads, squares and other occasions.

**In summary, this 24V low voltage LED light strip has many advantages and is an ideal choice for outdoor lighting, tunnels, basements and other decoration projects. If you have any questions or needs, please feel free to contact us.**



**SHENZHEN YSENLED LIGHTING CO.,LTD**



[lyzylight@gmail.com](mailto:lyzylight@gmail.com)



[led-stripslights.com](http://led-stripslights.com)

2F, Building 3, Ruibang Industrial , No.8 Laocun Road, Tangtou, Shiyan, Bao'an District, Shenzhen,  
Guangdong, China