

12V Embedded Line Light Extra Bright Low Voltage Light Strip for Store Commercial

Our Product Introduction

for more products please visit us on led-stripslights.com

Basic Information

- Place of Origin: SHENZHEN CHINA
- Brand Name: YSENLED
- Certification: CE ROHS LVD EMS
- Model Number: YSR60X5630RA-F3
- Minimum Order Quantity: 10
- Price: Negotiable
- Packaging Details: 10*1000*20
- Delivery Time: 2DAYS
- Payment Terms: L/C, D/A, D/P, T/T, Western Union, MoneyGram
- Supply Ability: 100,000 meters per week

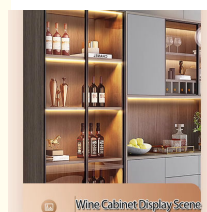
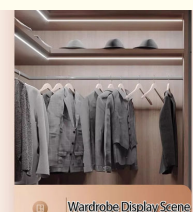
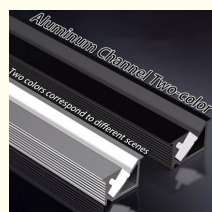


Product Specification

- Lamp Luminous Flux: 7-8lm/led
- Style: Customized
- Viewing Angle: 120 Degree
- Power Input: AC24V-36V
- Led Quantity: 300
- Led Light Source: SMD5050
- Power Source: USB
- Lighted Length: 39 Inches
- Waterproof Grade: IP68
- Lamp Bead Model: 2835
- Lumen: 50-55LM/CRI 85
- Inout Voltage: DC5V
- Led Chip Brand: Cree
- Lmpa Body Material: Silicone
- Size: 5000*5mm



More Images



Product Description

The following is a detailed introduction to the 24V double-row extra-bright low-voltage light strip self-adhesive store commercial linear light and 12V embedded line light LED lamp products:

1. 24V double-row extra-bright low-voltage light strip self-adhesive store commercial linear light

Product features:

High-brightness characteristics: High-brightness LED lamp beads are used to ensure excellent lighting effects and meet the needs of store commercial lighting brightness.

Low-voltage safety: The working voltage is 24V, which belongs to the safe voltage range, and it is safer and more reliable during use.

Self-adhesive design: With its own adhesive backing, it can be easily pasted

Our Product Introduction

on various planes, and the installation is simple and quick.

Double-row layout: The double-row LED lamp bead design makes the light more uniform and the lighting effect better.

Product advantages:

Energy saving and environmental protection: LED light strips have low power consumption, low heat generation, and long service life, which conforms to the modern energy-saving and environmental protection concept.

Easy to maintain: The self-adhesive design makes replacement and repair more convenient, and can be operated without professional tools.

Diversified applications: Suitable for store display, commercial lighting, home decoration and other occasions, and can be cut and spliced according to actual needs.

Product parameters:

Working voltage: 24V

Number of LED lamp beads: Depends on the specific model

Length: Can be customized according to customer needs

Waterproof level: Depends on the specific model, generally with IP65 and above waterproof performance

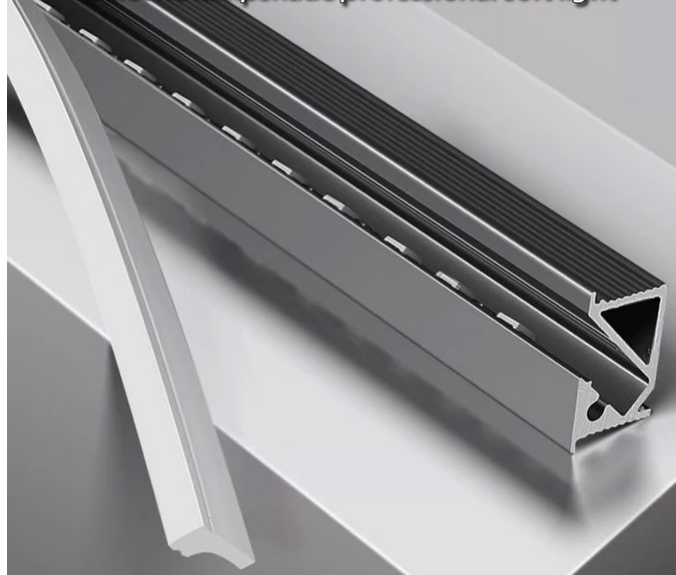
Hidden Lamp Installation

Does not destroy the overall coordination of the cabinet



Uniform Light Without Glare

Silicone lampshade professional soft light



[2. 12V embedded linear light LED lamp](#)

Product features:

Embedded design: The linear light adopts embedded installation method, which can be perfectly integrated into various decoration styles, does not take up space and is beautiful and generous.

Low voltage and stability: The working voltage is 12V, the performance is stable and reliable, and it is not easy to fail.

Soft light: The light emitted by the LED lamp beads is soft and uniform, without glare, and can create a warm and comfortable lighting environment.

Product advantages:

Energy saving and environmental protection: It also has the characteristics of low power consumption and long life, which conforms to the modern lighting concept.

Easy to install: The embedded design makes the installation process easier and faster, without complicated construction steps.

Flexible and changeable: It can be customized according to customer needs, including adjustments in length, color, brightness, etc.

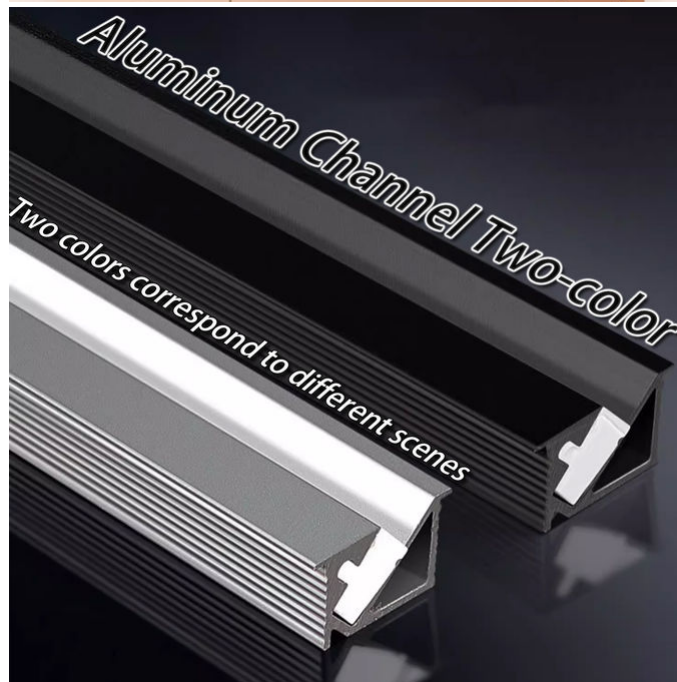
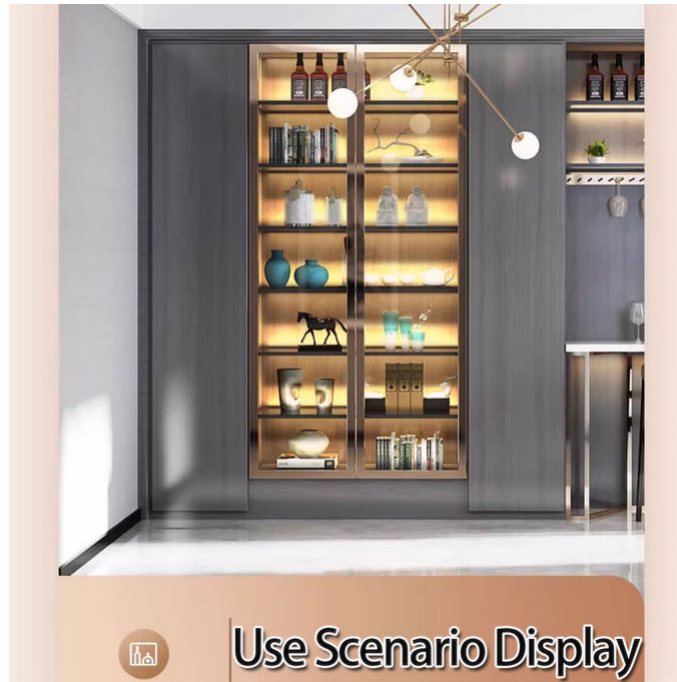
Product parameters:

Working voltage: 12V

Number of LED lamp beads: Depends on the specific model

Length: Can be customized according to customer needs

Waterproof level: It also has IP65 and above waterproof performance, suitable for a variety of environments.



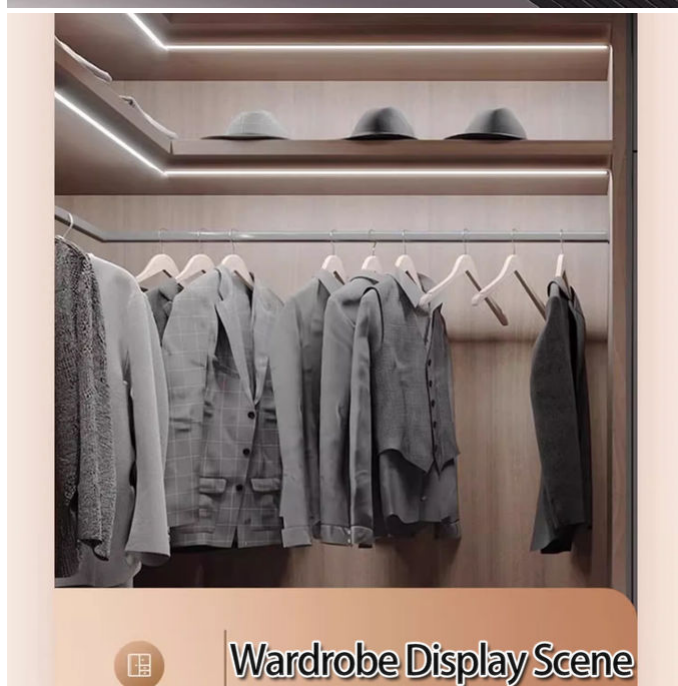
3. Application scenarios

Commercial use in shops: It can be used for lighting decoration in display cabinets, shelves, walls and other locations in shops to enhance the display effect of goods.

Home decoration: It can be used for lighting and decoration in living rooms,

bedrooms, kitchens and other spaces to create a warm and comfortable home atmosphere.

Public places: It can be used for lighting and decoration in public places such as hotels, restaurants, and shopping malls to enhance the quality of the overall environment.



In summary, 24V double-row ultra-bright low-voltage light strip self-adhesive store commercial linear lights and 12V embedded linear lights LED lamp products have multiple advantages and a wide range of application scenarios, which can meet the needs of different customers. When choosing, it is recommended to purchase according to the specific use environment and lighting needs.



SHENZHEN YSENLED LIGHTING CO.,LTD



lyzylight@gmail.com



led-stripslights.com

2F, Building 3, Ruibang Industrial , No.8 Laocun Road, Tangtou, Shiyan, Bao'an District, Shenzhen, Guangdong, China