



Self-Adhesive LED Light Strip Soft Cabinet Display Linear Patch Transformer-Free Linear Waterproof Light Strip

Our Product Introduction

for more products please visit us on led-stripslights.com

Basic Information

- Place of Origin: SHENZHEN CHINA
- Brand Name: YSENLED
- Certification: CE ROHS LVD EMS
- Model Number: YS-R120X2835RAF3
- Minimum Order Quantity: 10
- Price: Negotiable
- Packaging Details: 10*1000*20
- Delivery Time: 2DAYS
- Payment Terms: L/C, D/A, D/P, T/T, Western Union, MoneyGram
- Supply Ability: 100,000 meters per week

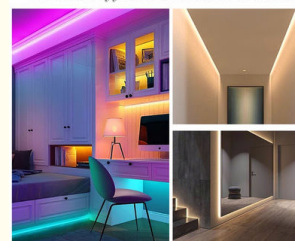


Product Specification

- Colour: Cool White (other Can Be Customized)
- Size: 3000x10mm
- Dc Cable: 1.5M
- Led Light Source: LED
- Warrant: 1year
- Storage Temperature: -20 ~60
- Odm: Available
- Lifespan: 50,000 Hours
- Product: RGB Flexible Light Strips
- Function: Underground Mine Tunnel Lighting
- Working Wattage: 5W
- Fire Resistant: Yes
- Adaptoe: DC12V
- Lighting Color: White/Colorful
- Power Adaptoe: DC24V

Scenes Show Various Effects

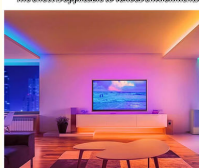
The effect is applicable to various environments



More Images

Scenes Show Various Effects

The effect is applicable to various environments



Scenes Show Various Effects

The effect is applicable to various environments



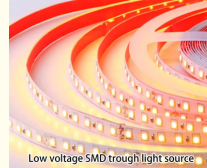
Low Voltage High Display LED Light Strip

Low voltage, high brightness, waterproof, cabinet aluminum troughs, etc.



Light Through Groove Comparison

24V Low Voltage Light Strip



12/24V low voltage light strip, safe to use without hurting anyone



Product Description

Self-adhesive LED light strip soft cabinet display linear patch transformer-free linear waterproof light strip is a multifunctional, high-performance lighting product, widely used in interior decoration, commercial display, outdoor lighting and other fields. The following is a detailed introduction to the product:

1. Product Features

Self-adhesiveness: The back of the product has 3M adhesive, which is easy to install and can be directly pasted on a flat surface without additional fixings.

LED patch technology: The patch Chip RGB is used as the light source, with a large luminous angle, bright and uniform colors, and can achieve rich

Our Product Introduction

visual effects.

Transformer-free design: Supports direct power supply with 220V voltage, without the need for an external transformer, which simplifies the installation process and improves the convenience of use.

Linear waterproof: The product has a waterproof function and is suitable for humid environments or outdoor use, which increases the flexibility and safety of use.

Soft and bendable: Using a soft PCB board as the substrate, it can be freely bent according to installation requirements and adapt to various complex installation environments.

Intelligent control: Supports multiple control methods, such as DMX512 control system, full-color controller CT308, etc., which can achieve a variety of change effects such as color jump and gradient of each driver.



2. Technical parameters

Light emitter: Chip RGB

Lighting angle: 120 degrees

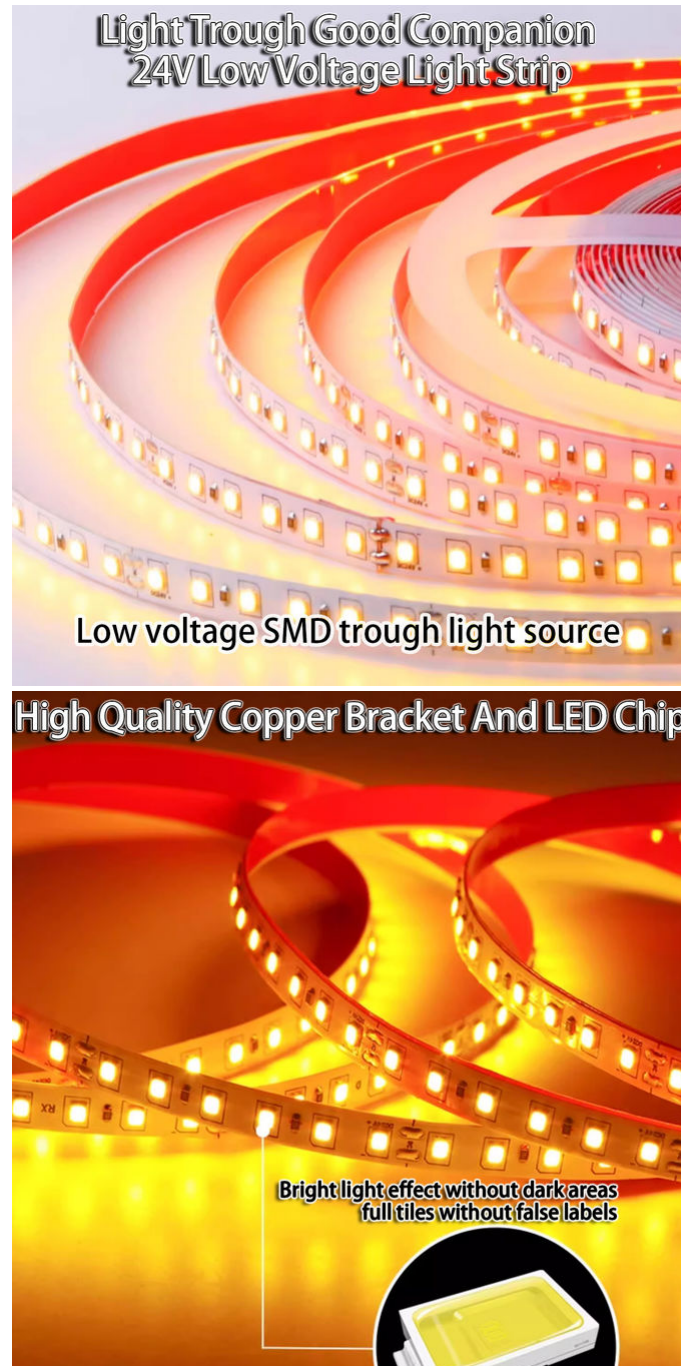
Specifications: Each 50cm strip has 15 LEDs, 24 LEDs, and 30 LEDs

Power: 3.6W/0.5M/12V DC or 5.76W/0.5M/24V DC (Note: This is for reference only, transformer-free products are usually directly marked with 220V power)

LED center distance: 33mm, 20mm (customizable according to customer needs)

Color selection: A variety of light colors are available, such as red, green,

blue, etc.



3. Application scenarios

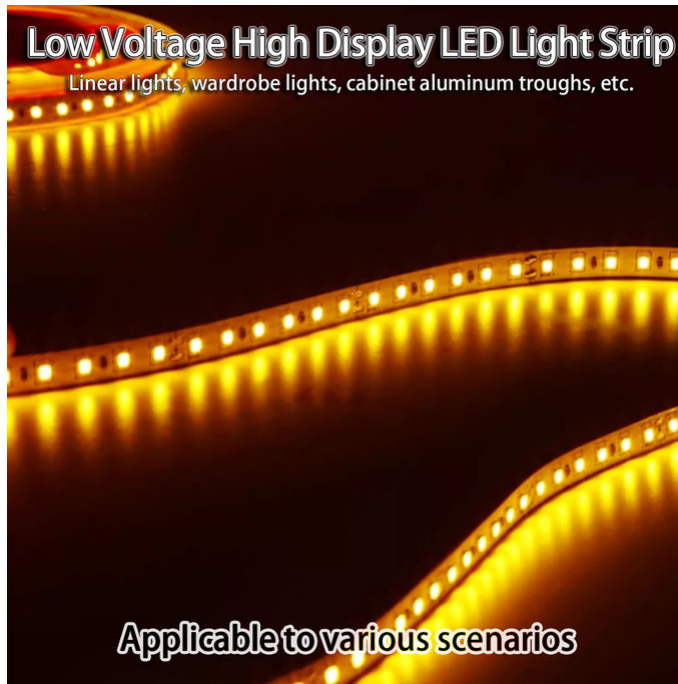
Indoor decoration: used for wall decoration, ceiling lighting, etc. in homes, hotels, restaurants, etc.

Commercial display: used for display cabinet lighting, background wall decoration, etc. in shopping malls and exhibition halls.

Outdoor lighting: suitable for outdoor lighting and decoration such as building outlines, garden landscapes, billboards, etc.

Low Voltage High Display LED Light Strip

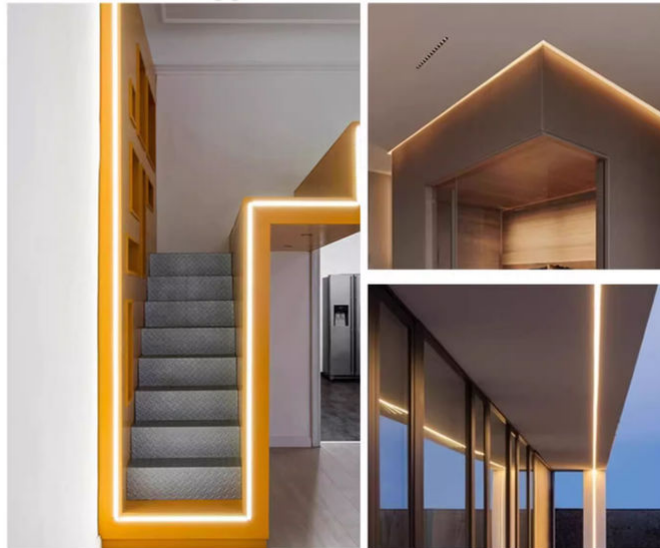
Linear lights, wardrobe lights, cabinet aluminum troughs, etc.



Applicable to various scenarios

Scenes Show Various Effects

The effect is applicable to various environments



4. Purchase suggestions

Brand selection: Choose products from well-known brands, and the quality is more guaranteed.

Parameter comparison: Compare the product's luminous effect, waterproof level, power and other parameters according to actual needs.

After-sales service: Pay attention to the after-sales service policy of the product and choose a brand that provides perfect after-sales service.

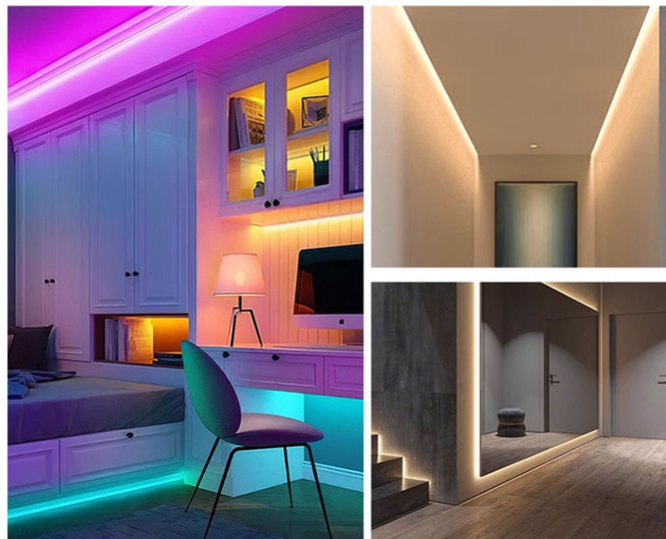
Scenes Show Various Effects

The effect is applicable to various environments



Scenes Show Various Effects

The effect is applicable to various environments



5. Installation and maintenance

Installation: Install according to the product manual to ensure that the installation environment is dry and flat.

Maintenance: Regularly check whether the connection of the light strip is firm to avoid long-term overload use.

In summary, the self-adhesive LED light strip soft cabinet display linear patch transformer-free linear waterproof light strip is a powerful, easy-to-install and flexible lighting product that can meet the lighting and decoration needs in various scenarios.



SHENZHEN YSENLED LIGHTING CO.,LTD



lyzylight@gmail.com



led-stripslights.com

2F, Building 3, Ruibang Industrial , No.8 Laocun Road, Tangtou, Shiyan, Bao'an District, Shenzhen, Guangdong, China