

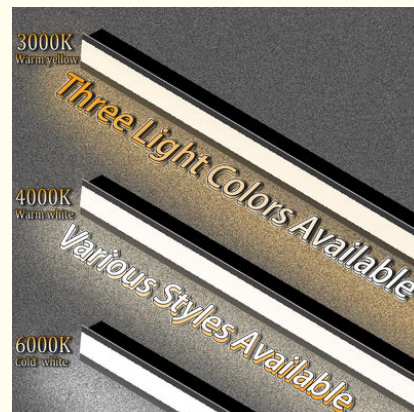


Welding-Free Cabinet Light Strip Embedded Layer Light Clothing And Shoes Wine Cabinet Induction Linear Light Strip

Our Product Introduction

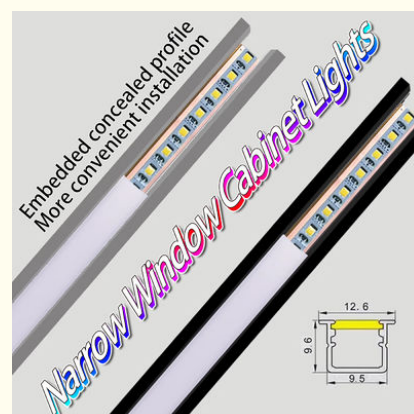
Basic Information

- Place of Origin: SHENZHEN CHINA
- Brand Name: YSENLED
- Certification: CE ROHS LVD EMS
- Model Number: YS-BAPL028
- Minimum Order Quantity: 10
- Price: Negotiable
- Packaging Details: 10*1000*20
- Delivery Time: 2DAYS
- Payment Terms: L/C, D/A, D/P, T/T, Western Union, MoneyGram
- Supply Ability: 100,000 meters per week

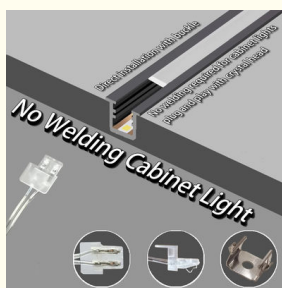


Product Specification

- Customized Design: Available
- Dimmable: Supports Dimming Function
- Input Voltage: 24V Low Voltage
- Ip Rating: IP20/IP65/IP67
- Color: Red/Yellow/Blue/Green/White/Warm White
- Radiation: No Ultraviolet And Infrared Radiation
- Cuttable Length: Every 3 LEDs
- Surface Treatments: Oxidation, Sandblasting, Wire Drawing
- Power Supply Voltage: Supports DC12V And DC24V Versions
- Waterproof: Yes
- Waterproof Performance: Many Products Have Waterproof Designs
- Type: LED Bar Lights
- Pcb: Aluminum
- Beam Angle: 120°
- Heat Dissipation Design: Good Thermal Conductivity



More Images



Product Description

Welding-free cabinet light strip embedded layer light line light clothing and shoes wine cabinet induction linear light strip linear light products, as a modern lighting solution, are widely used in home decoration and commercial display, providing convenient and beautiful lighting methods for cabinets, wardrobes, wine cabinets and other furniture. The following is a detailed introduction to this type of product:

1. Product features

Welding-free design: The product adopts welding-free technology, which is easy and quick to install, and does not require professional welding tools, which greatly reduces the difficulty and cost of installation.

Embedded installation: The light strip can be embedded in the layer board, cabinet edge or line groove to achieve seamless docking, do not take up space, and is beautiful and generous.

Induction function: Some products have human body sensing function, which can automatically light up when someone approaches and automatically turn off when no one is around, which is both energy-saving and convenient.

Linear design: The light strip is linear, suitable for various straight or curved lighting needs, and can create a warm and comfortable lighting atmosphere.

Multi-color optional: The product provides a variety of color temperature options, such as warm light, neutral light, white light, etc., to meet different scenes and personalized needs.



2. Specifications

Since the product specifications of different brands and models may vary, the following are some common specification parameter ranges (subject to the actual product):

Power: usually between 5W and 20W, can be customized according to specific needs.

Color temperature: 3000K to 6000K, including warm light, neutral light and white light.

Input voltage: mostly DC12V or DC24V, safe low voltage, easy to install and use.

Protection level: such as IP43, with certain dustproof and waterproof functions.

Lighting angle: Depending on the product design, the light-emitting angle also varies.

Length: The product length can be cut as needed, generally supporting any length cutting.

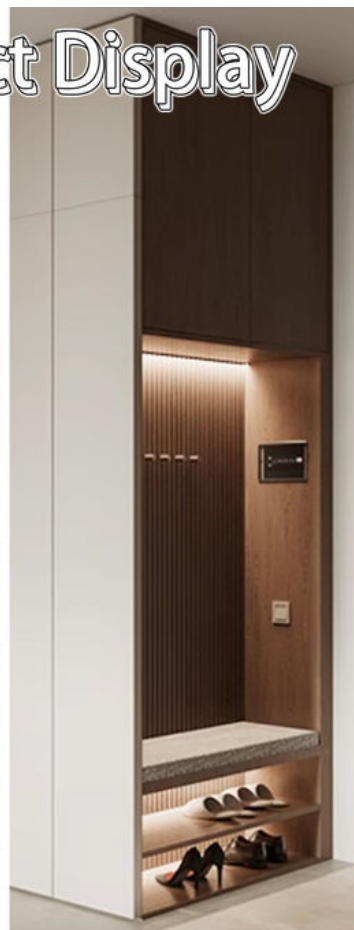
3. Application scenarios

Home decoration: used for lighting of furniture such as cabinets, wardrobes, wine cabinets, shoe cabinets, etc., to improve home quality and living comfort.

Commercial display: used for lighting of display cabinets and booths in places such as clothing stores, jewelry stores, and museums to highlight the characteristics of goods and attract customers' attention.



Use Scene Effect Display



Use Scene Effect Display





4. Installation and maintenance

Installation: Before installation, make sure the power is turned off and install according to the product manual. Usually, the light strip needs to be pasted or embedded in the predetermined position and connected to the power supply.

Maintenance: Clean the surface of the light strip regularly to avoid dust and dirt accumulation affecting the lighting effect. If the light strip is found to be damaged or faulty, it should be replaced or repaired in time.

5. Brand and price

There are many brands on the market (such as YSENLED) that provide products such as welding-free cabinet light strips, embedded layer lights, linear lights, etc. The price varies depending on factors such as brand, specifications, and materials. Consumers should choose the right product according to actual needs and budget when purchasing.

In summary, products such as welding-free cabinet light strips, embedded layer lights, linear lights, etc. have become one of the important choices for modern home and commercial lighting with their unique advantages and wide application scenarios.



SHENZHEN YSENLED LIGHTING CO.,LTD



lyzylight@gmail.com



led-stripslights.com

2F, Building 3, Ruibang Industrial , No.8 Laocun Road, Tangtou, Shiyan, Bao'an District, Shenzhen, Guangdong, China