



LED Embedded Wine Cabinet Light Strips And Other 45-Degree Oblique Light Trough Products

Our Product Introduction

Basic Information

- Place of Origin: SHENZHEN CHINA
- Brand Name: YSENLED
- Certification: CE ROHS LVD EMS
- Model Number: YSR60X5630RA-F3
- Minimum Order Quantity: 10
- Price: Negotiable
- Packaging Details: 10*1000*20
- Delivery Time: 2DAYS
- Payment Terms: L/C, D/A, D/P, T/T, Western Union, MoneyGram
- Supply Ability: 100,000 meters per week



Product Specification

- Led Chip: Smd5730
- Price Range: From A Few Yuan To Dozens Of Yuan
- Waterproof: Yes
- Led Chips: High-power
- Adhesive Backing: Yes
- Application: Decorative Lighting
- Ip Rating: IP65
- Pcb: Aluminum
- Lifetime: 50,000 Hours
- Color Temperature Options: Warm White, Pure White, Cool White
- Customized Design: Available
- Power Factor: Above 0.9
- Led Qty: 72LED/M
- Material: Aluminium
- Surface Treatments: Oxidation, Sandblasting, Wire Drawing



More Images



for more products please visit us on led-stripslights.com

Product Description

LED embedded cabinet lights, wardrobe light strips, wine cabinet light strips and other 45-degree oblique light trough products are common choices in modern home lighting. They not only provide good lighting effects, but also enhance the layering and aesthetics of home space. The following is a detailed introduction to this type of product:

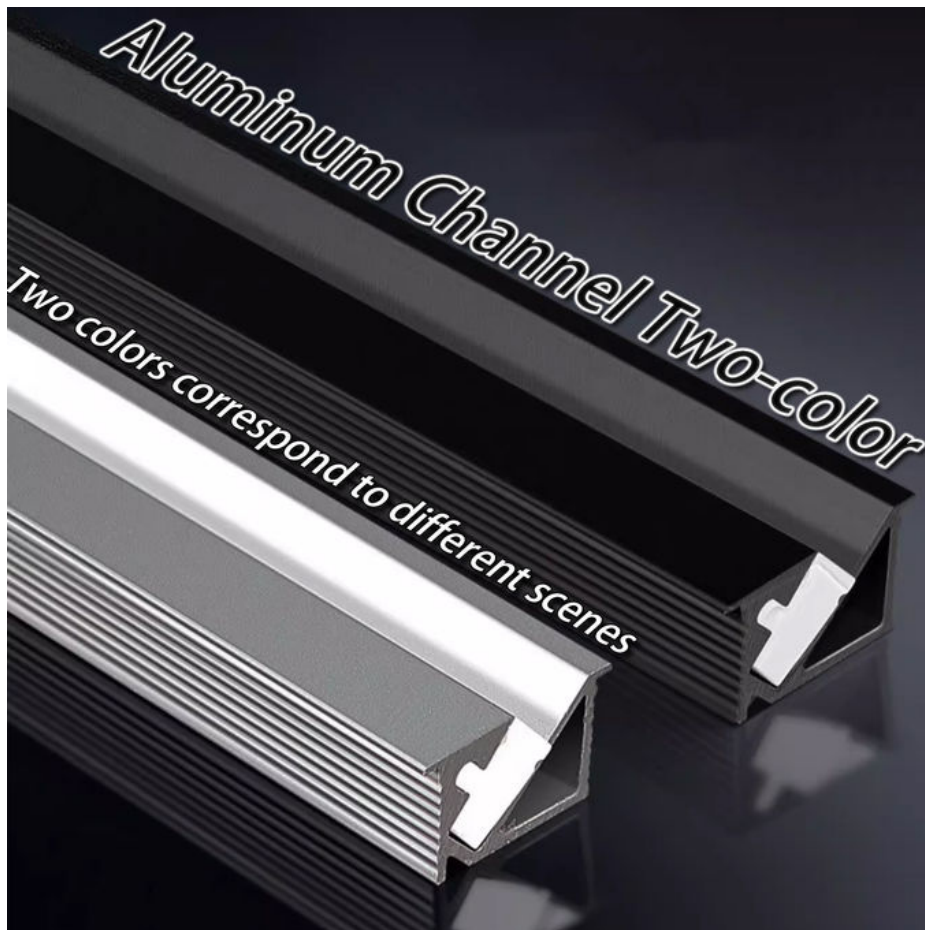
1. Product Overview

LED embedded cabinet lights, wardrobe light strips, wine cabinet light strips, etc. usually use high-quality LED light sources, combined with embedded installation methods and 45-degree oblique light design, which can accurately illuminate the space inside the cabinet while avoiding glare and shadows, creating a warm and comfortable lighting environment.

Hidden Lamp Installation

Does not destroy the overall coordination of the cabinet





2. Product Features

Embedded design: The product adopts embedded installation, does not take up extra space, and is easy to install. It can be perfectly integrated with the cabinet body to enhance the overall aesthetics.

45-degree oblique light: The unique 45-degree oblique light design allows the light to be evenly distributed to every corner of the cabinet, reducing shadows and dark areas and improving the lighting effect.

High-quality LED light source: It uses high-quality LED light sources with long life, low power consumption, high brightness and other characteristics, and can provide lighting services in a long-lasting and stable manner.

Intelligent control: Some products support intelligent control functions, such as induction control, remote control, etc., which can flexibly adjust the brightness and switch status according to actual needs.

Anti-glare design: Through special optical design and material selection, it effectively reduces glare and protects eye health.

3. Product specifications and parameters

Since the product specifications and parameters of different brands and models may vary, the following are some common specifications and parameter ranges for reference:

Length: Customized according to the size of the cabinet, common lengths are 1 meter, 2 meters, 3 meters, etc.

Width/height: Determined according to specific design and installation requirements, generally small and does not take up too much space.

Power: Usually between a few watts and more than ten watts, depending on the number of light sources and brightness requirements.

Voltage: Generally 12V or 24V low-voltage DC power supply, safe and reliable.

Color temperature: It can be selected according to personal preferences and home style. Common ones are warm white light (about 3000K), neutral light (about 4000K) and cold white light (about 6000K).

Lighting angle: 45-degree oblique light design to ensure even light distribution.

4. Application scenarios

LED embedded cabinet lights, wardrobe light strips, wine cabinet light strips and other 45-degree oblique light trough products are widely used in various home scenes, such as kitchen cabinets, wardrobes, wine cabinets, shoe cabinets, etc. They can not only provide sufficient lighting, but also add a sense of warmth and fashion to the home space.



Use Scenario Display



Use Scenario Display



Wine Cabinet Display Scene



Wardrobe Display Scene

5. Installation and maintenance

Installation: Before installation, make sure that the power is turned off and install according to the steps in the product manual. During the installation process, pay attention to the fixing and routing of the light strip to ensure beauty and safety.

Maintenance: LED embedded light strips generally have a long life, but they still need regular inspection and maintenance. If the light strip is not lit or the brightness is reduced, check whether the power supply and light strip connection are normal in time, and replace the damaged parts if necessary.

In summary, LED embedded cabinet lights, wardrobe light strips, wine cabinet light strips and other 45-degree oblique light trough products have become a popular choice in modern home lighting with their unique design and superior performance. When purchasing, it is recommended to choose a suitable product brand and model according to personal needs and budget.



SHENZHEN YSENLED LIGHTING CO.,LTD



lyzylight@gmail.com



led-stripslights.com

2F, Building 3, Ruihang Industrial , No.8 Laocun Road, Tangtou, Shiyan, Bao'an District, Shenzhen,
Guangdong, China