



Low-Voltage Light Strip Self-Adhesive Linear Light Living Room Patch Cabinet Embedded Line Light Slot LED Light Strip

Our Product Introduction

Basic Information

- Place of Origin: SHENZHEN CHINA
- Brand Name: YSENLED
- Certification: CE ROHS LVD EMS
- Model Number: YSR60X5630RA-F3
- Minimum Order Quantity: 10
- Price: Negotiable
- Packaging Details: 10*1000*20
- Delivery Time: 2DAYS
- Payment Terms: L/C, D/A, D/P, T/T, Western Union, MoneyGram
- Supply Ability: 100,000 meters per week



Product Specification

- Features: IP68, Explosion Proof, Impact Proof
- Safety: Voltage/Temperature Control
- Outer Covering: Food Grade Silicons
- Ip Rating: Ip65
- Led Type: 5050
- Batteries Included: No
- Lighting Color: Single Red
- Ip Grade: IP20, IP33, IP65, IP67, IP68
- Item Number: DW-50RG3
- Warranty: 3 Years
- Input Power: 5V
- Dimention: 5 Meter Per Reel
- Connector Grade: IP68
- Cct: 3000K
- Cri: 85



More Images



Product Description

12V/24V low-voltage light strip self-adhesive linear light living room patch cabinet embedded line light slot LED light strip products are a type of lighting products widely used in home decoration, commercial lighting and other fields. Such products usually have the characteristics of low voltage, energy saving, easy installation, high brightness, etc., which can meet the lighting needs in different scenes. The following is a detailed description of such products:

1. Product Features

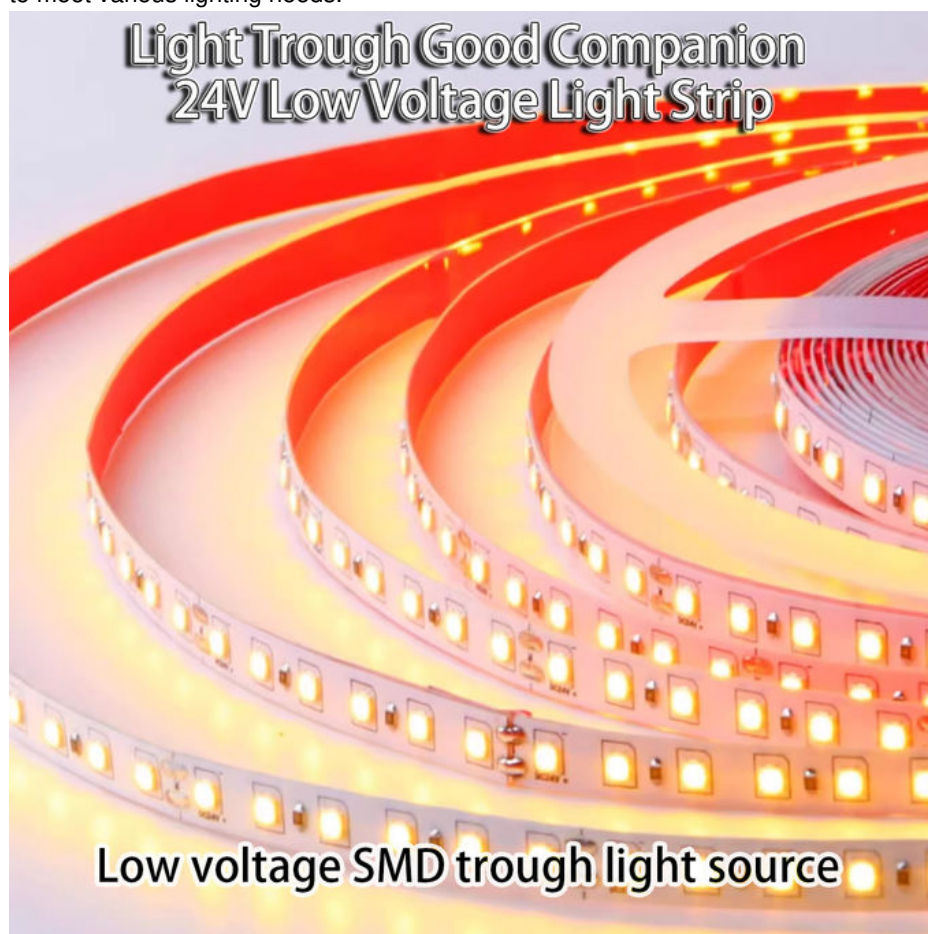
Low voltage safety: 12V or 24V low-voltage power supply is used, which is safer and more reliable than traditional high-voltage lamps, reducing the risk of electric shock.

Energy saving and environmental protection: LED as a light source has the characteristics of low power consumption and high efficiency, which can effectively save energy and reduce the cost of use.

Self-adhesive design: The back of the light strip usually has adhesive, which can be easily pasted to the location where lighting is required without the need for additional fixings.

Flexible and plastic: The light strip is made of flexible material and can be bent into various shapes as needed to adapt to different installation environments.

High brightness: LED light source has high brightness characteristics and can provide uniform and bright light to meet various lighting needs.



2. Application scenarios

Living room lighting: can be used as decorative lighting for the background wall, ceiling, TV cabinet and other locations in the living room to create a warm and comfortable home atmosphere.

Cabinet lighting: embedded installation inside the cabinet, providing soft light, convenient cooking and taking things, while increasing the beauty of the cabinet.

Commercial lighting: suitable for lighting display cabinets, shelves, ceilings and other locations in commercial places such as shopping malls, hotels, restaurants, etc., to enhance the overall lighting effect.

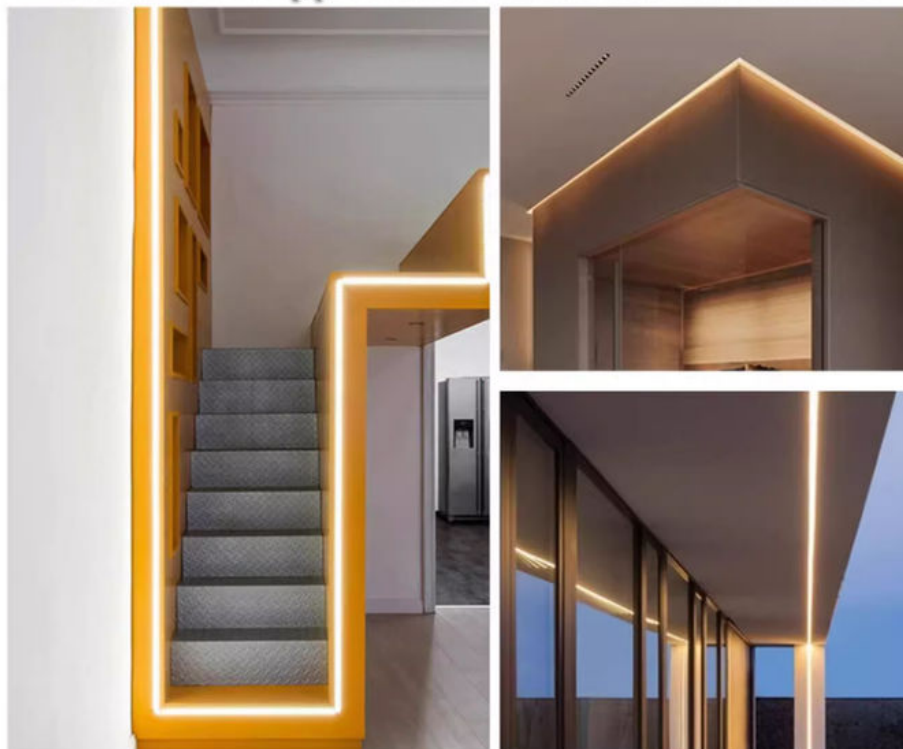
Scenes Show Various Effects

The effect is applicable to various environments



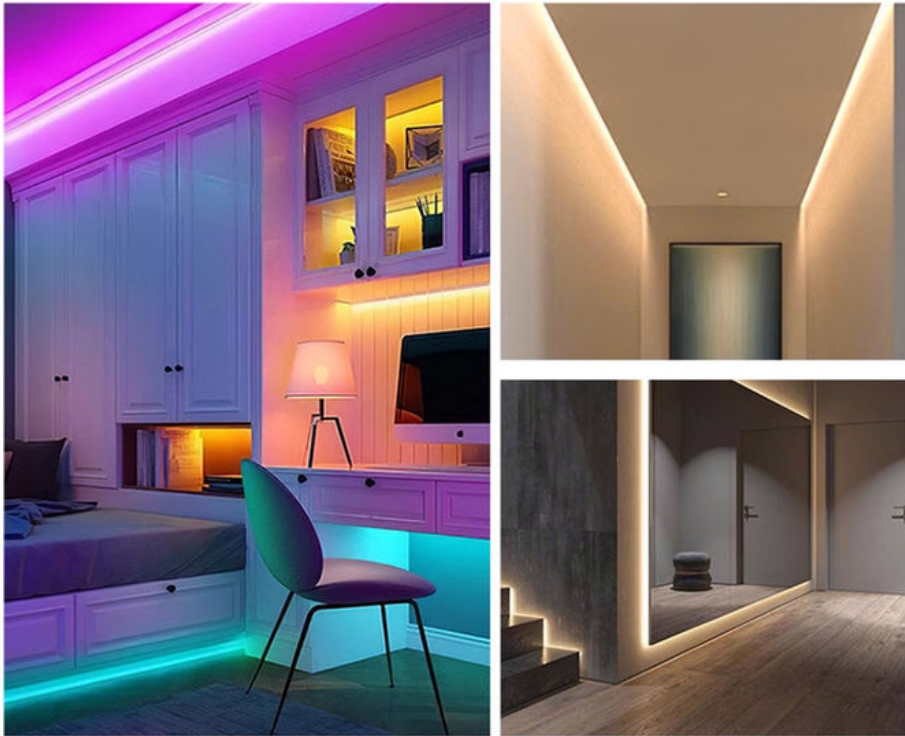
Scenes Show Various Effects

The effect is applicable to various environments



Scenes Show Various Effects

The effect is applicable to various environments



Scenes Show Various Effects

The effect is applicable to various environments



3. Product specifications and parameters

Since the product specifications and parameters of different brands and models may vary, the following are some common specifications and parameter ranges for reference:

Voltage: 12V or 24V

Power: depends on the length of the light strip and the number of LEDs, the common power range is from a few watts to more than ten watts per meter.

Number of LEDs: depends on the length and density of the light strip, the common number is from dozens to

hundreds of LEDs per meter.

Color: warm light (such as 3000K), neutral light (such as 4000K), white light (such as 6000K) and other colors are available.

Width: common widths such as 5mm, 8mm, 10mm, etc.

Length: Different lengths can be customized, common lengths are 1 meter, 5 meters, 10 meters, etc. Some products provide set options, including light strips and transformers.



4. Installation and precautions

Preparation before installation: Make sure the installation location is flat, dry, dust-free and oil-free. Prepare installation tools such as scissors, tape, screwdrivers, etc. as needed.

Connect the power supply: Connect the positive and negative poles of the light strip to the corresponding interface of the low-voltage power supply. Pay attention to distinguish the positive and negative poles to avoid damage caused by reverse connection.

Fix the light strip: Paste the light strip in the specified position as needed. Make sure it is firmly pasted to avoid falling off or shifting.

Debugging check: After turning on the power, check whether the light strip is on, whether the brightness is uniform, and whether the color is consistent. If there is any abnormality, check and deal with it in time.

Safety precautions: During installation and use, pay attention to electrical safety to avoid dangerous situations such as electric shock and short circuit.

The above information is for reference only. The specifications, parameters and installation methods of specific products may vary depending on the brand and model. When purchasing and using, please be sure to refer to the product manual and the guidance information provided by the manufacturer.



SHENZHEN YSENLED LIGHTING CO.,LTD



lyzylight@gmail.com



led-stripslights.com

2F, Building 3, Ruibang Industrial , No.8 Laocun Road, Tangtou, Shiyan, Bao'an District, Shenzhen, Guangdong, China