



15 Degree Beam Angle LED Recessed Downlight Rotatable Recessed 12W 70mm

Our Product Introduction

for more products please visit us on led-stripslights.com

Basic Information

- Place of Origin: Guangdong, China(Mainland)
- Brand Name: Sunled
- Certification: CE, EMC, LVD, RoHS
- Minimum Order Quantity: 200
- Packaging Details: Carton: 15*10*12cm, 1pcs/ctn
- Delivery Time: 5-7days
- Payment Terms: L/C, D/A, D/P, T/T, MoneyGram, Western Union
- Supply Ability: 40000 pieces per month



Product Specification

- Product Name: Rotatable Cob Led Downlight
- Power: 12w
- Power Factor: 90
- Working Lifetime: 50000 Hours
- Lumin: 110-120lm/w
- IP Rank: IP44
- Beam Angle: 15°
- CRI(Ra): 80
- Size: 108*70mm
- Warranty: 3 Years
- Highlight: LED Recessed Downlight Rotatable,
15 Degree LED Recessed Downlight,
LED Recessed Downlight 12W



More Images



Product Description

China factory High Efficiency Rotatable Recessed 12W 70mm COB LED Downlight

Feature:

1. High temperature resistance lens, profile aluminum housing;
2. Use external radiator. Built-in aluminum radiator with aluminum alloy, convection heat dissipation technology;
3. **Intelligent power supply:** Automatically control the current of the circuit and stabilize the voltage;
4. The illumination angle supports adjustment and multi-directional illumination;
5. Self-packaged high lumen COB, adopting Epistar chips, import Japanese ceramic substrate, import Japanese fluorescent power;
6. **High lumen efficiency 110lm/w, CRI>80;**
7. Stable quality transformer, good short/over voltage/current protection;
8. High uniformity, pure color rendering and color quality for better visibility;
9. Applied to bar, hotel, artworks, landscapes, shopping mall, show window, display case, amusement parks, meeting room and residential lighting.

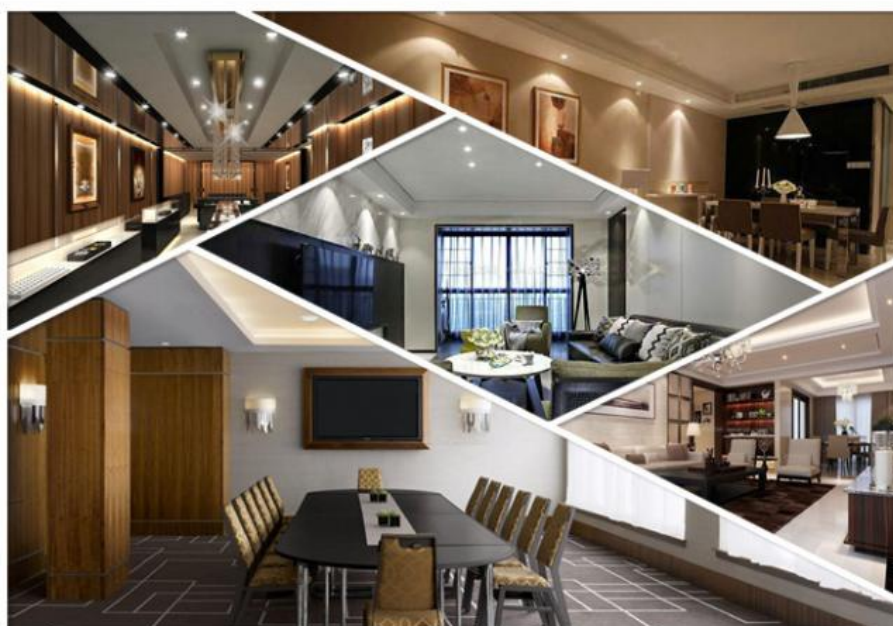
Product Details:

- (1). CREE COB chip: High CRI>80Ra; **High Lumen>100lm/w**
- (2). CCT:2700K/3000K/4000K/5000K option;
- (3). Reflector: PMMA reflector optical penetration rate above 90%;
- (4). Wire Diameter:4.5mm steady secure; DC interface diameter:11mm closely connected ; quickly connected, easily disassemble;

Application:

- Interior lighting, festival Decoration;
- Home/office lighting, supermarket;
- Exhibition, down lighting;
- Comercial: Shopping mall, stores, retails, super markets, etc.
- Shower room and bathroom.
- Recessed cabinet, ceiling/pendant light etc.

Any needs, please contact us
 Email: lyzylight@gmail.com
 WhatsApp: +86-19128233885
 Skype: live:.cid.6e8551210acad66c



Product Description:

Power	PF	IP rank	Lumin	Beam angle	Size(mm)	
					Dia*Height	Hole
10W	90	IP44	110-120lm/w	15°	108*70mm	95mm
20W	90	IP44	110-120lm/w	15°	138*95mm	115mm

Company Introduction:

Established in 2006, **Shenzhen Sunled Lighting CO., LTD** is a manufacturer and trader specialized in the **LED light**, developing and production of all types of LED lights. We are located in Shenzhen, Guangdong province, with convenient transportation access. All of our products comply with international quality standards and are appreciated in a variety of different markets throughout the world.

Quality is our future. We have already established a long-term business relationship with customers from all over the world, including Europe, South-North America, India and so on.

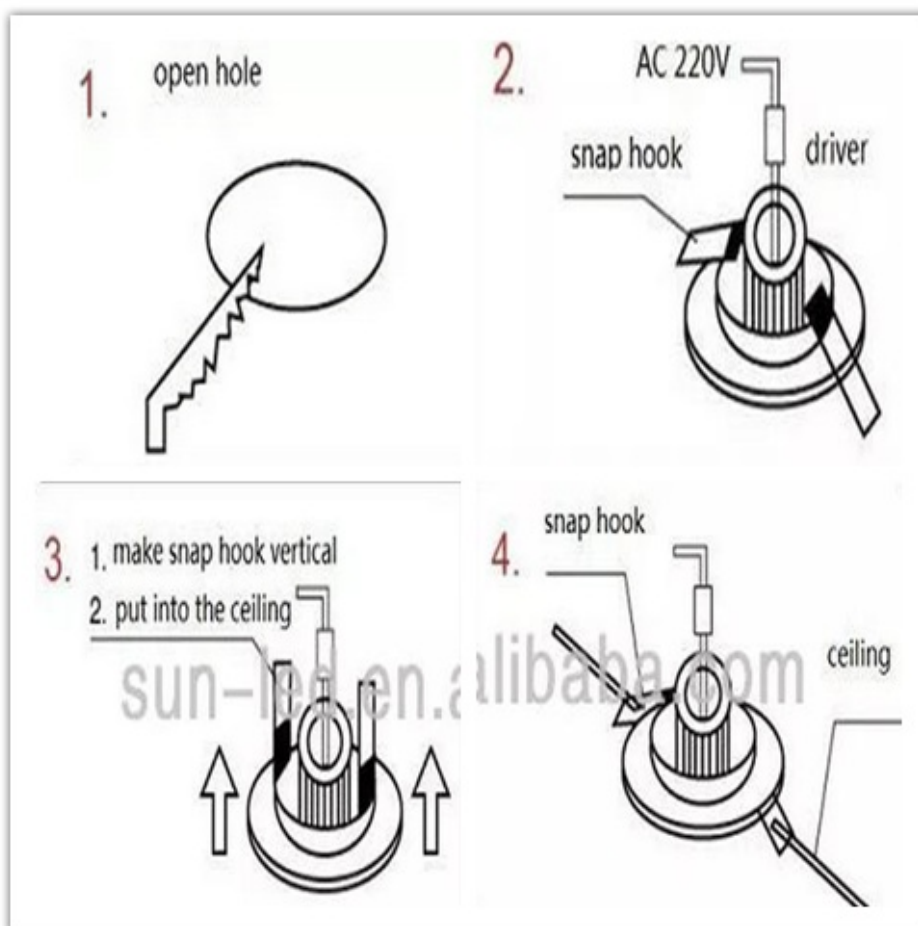
If you are interested in any of our products or would like to discuss a custom order, please feel free to contact us. We are looking forward to forming successful business relationships with new clients around the world in the near future.

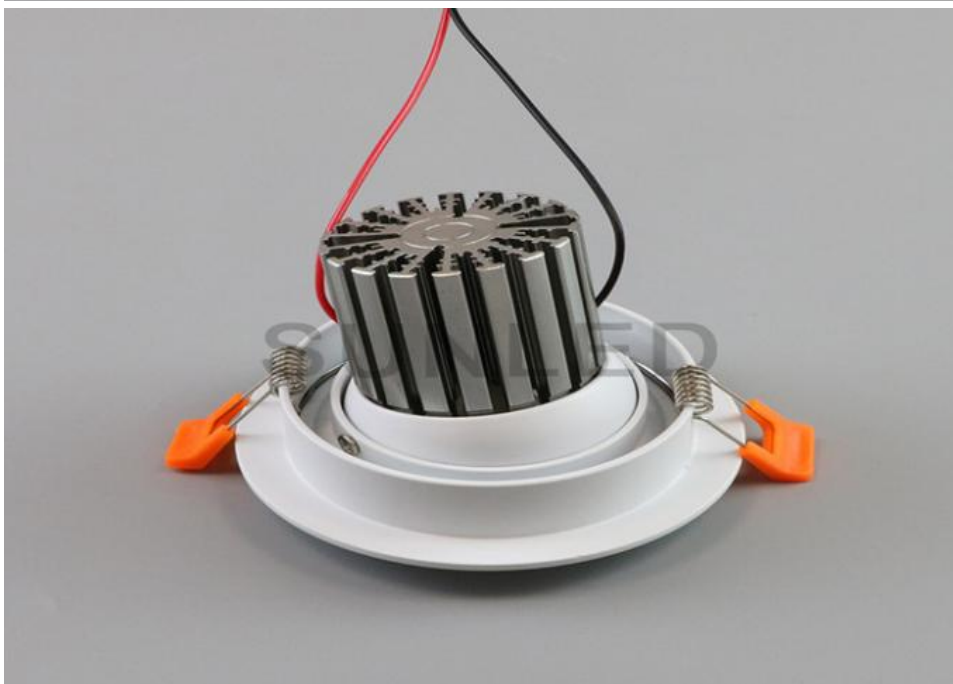




Installation:

1. Tools to open the appropriate holes in the ceiling;
2. Connect the AC power;
3. Make the spring clasp upward, put into the hole;
4. Spring clasp







SHENZHEN YSENLED LIGHTING CO.,LTD



lyzylight@gmail.com



led-stripslights.com

2F, Building 3, Ruibang Industrial , No.8 Laocun Road, Tangtou, Shiyan, Bao'an District, Shenzhen,
Guangdong, China